



Spare Parts Book

Reference: 7711167050
Date: 06/10/2014

HOW TO ORDER SPARE PARTS

Pieces Competition RENAULT SPORT/ALPINE
Avenue de Breaute
76200 DIEPPE

Find the updates on Internet
<http://www.renault-sport.com>



TECHNICAL INFORMATION

Tel: 0033 1 76 86 31 50

Fax: 0033 1 76 86 34 01



RENAULT *SPORT*



WARRANTY

- Competition do not carry any specific contractual warranty
- Moreover, we would like to point out that the fitting of RenaultSport competition parts to RENAULT cars may render them illegal for use on public highways.
- RENAULT SPORT parts intended for competition use could modify the standard specification of road vehicles, as specified by the component authorities governing the technical roadworthiness of vehicles ("mines"). This applies to factors such as noise, pollution, tyre sizes, performance, etc.

Notes

- Competition parts cannot be returned or exchanged.
- Pricing of parts distributed by RENAULT SPORT is reviewed periodically. Please refer to the date of the part prices catalogue.

PARTS ALPHABATIC INDEX

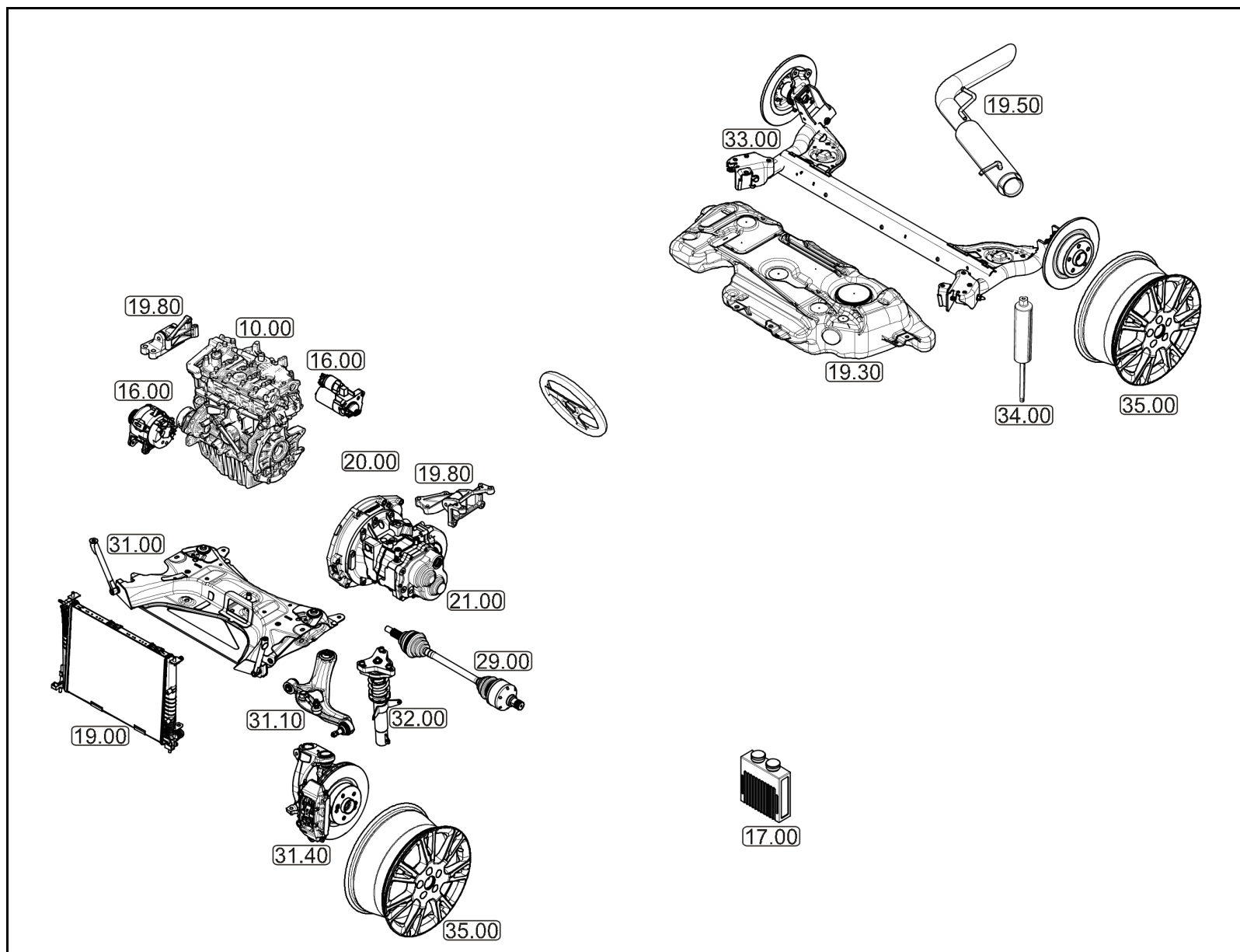
	Description	Boards	Description	Boards	Description	Boards		
A	Adaptator	32.01	Canon de centrage pour carénage Ep:8mm	31.00	Ecrou frein Simmonds M6 6PH135M	32.00		
	Adaptator M12x150 Dash3	12.50		31.01	Ecrou H emb M8	37.60		
	Aérateur	59.30	Capteur cliquetis	17.00	Emetteur embrayage	20.00		
	Agrafe capteur	11.20	Capteur oxygène	17.00	Engine K4M854 "série"	10.00		
	Agrafe panneau de porte	48.50	Capteur température air	17.00	Engine speed sensor	17.00		
	Air pressure sensor	17.00	Capteur vitesse roue	33.00	Engine subframe	31.00		
	Alternator	16.00	Carenage sous moteur	31.00	Enjoliveur aile ARD	55.20		
	Amortisseur AVD	32.00		31.01	Enjoliveur aile ARG	55.20		
	Amortisseur AVG	32.00	Cavalier maintient tuyau sur bloc	12.50	Enjoliveur D bouclier AR	55.20		
	Amplificateur de freinage	37.60	Chape de réglage pédale de frein	37.60	Enjoliveur D bouclier AV	55.20		
	Amplificateur de freinage modifié	37.60	CHS Bolt M10x125-43	33.00	Enjoliveur G bouclier AR	55.20		
	Anneau fixation sangle roue de secours	35.00	CHS Bolt M6-20	34.01	Enjoliveur G bouclier AV	55.20		
	Axes de fermeture Camloc	81.10	CHS Bolt M6-30	32.00	Enjoliveur inf. D bouclier AV	55.20		
		81.11	CHS Bolt M6-40 cl:12.9	32.00	Enjoliveur inf. G bouclier AV	55.20		
	B	Baguette latérale D	55.20	CHS Bolt M8-35 cl.12	75.00	Etrier AVD	31.40	
		Baguette latérale G	55.20	CHS Bolt M8x125-40 CL 12.9	37.60	Exhaust collar	19.50	
		Ballast recablé	81.10	Circlips de roulement de roue AV	31.40	Extincteur Manuel	75.00	
Banjo		12.50	Collar screw H M12	31.00	F	FHS Bolt M5-35	36.00	
Banjo bolt		12.50		31.01	Film anti-déflagrant	54.00		
Baquet Racer Duo noir taille L		75.00	Collar screw H M6	11.20	Filtre "Legris"	32.01		
Baquet Taurus logo 2011 Taille L		75.00	Collar screw H M6-25	11.20	@Fire extinguisher	75.00		
Baquet Taurus logo 2011 Taille XL		75.00	Collar screw H M8-25	31.00	Fire extinguisher command box	75.00		
Baquet Taurus taille M		75.00		31.01	Fitting 3 voies AR	37.80		
Bas de caisse D		55.20	Collection attache capot / hayon avec tige	40.00	Fitting 4 voies	37.80		
Bas de caisse G		55.20	acier		Fixing bolt	59.30		
Bielle de reprise de couple		19.80	Collection supports à souder	40.00	Flexible de carburant réservoir vers Té	12.50		
Bilstein bearing		32.01	Coll joint	31.40	Flexible de carburant Té vers rampe	12.50		
Blanking plug M10		37.80	computer	17.00	Flexible joint production	33.00		
Bobine allumage		17.00	Concave washer	33.00	Flexible mounting ring	32.01		
Boite de vitesses couple court 14x69		21.00	Contre plaque D fix. extincteur manuel	75.00		34.01		
Boitier sortie eau sans calorstat		11.20	Contre plaque fix. extincteur	75.00	Front Wing-LH	46.00		
Bonnet		48.00	Contre plaque G fix. extincteur manuel	75.00	Front Wing-RH	46.00		
Bouchon de moyeu		33.00	Convex washer	33.00	@Fuel rail	12.50		
Bride fix. biellette de BAR		32.00	Copper washer 10x14x1	37.80	Fuel rail cap M12x150:314-M12	12.50		
Bulb		81.10	Copper washer Ø12x18 ép:2	12.50	Fuel tank filler cap	12.50		
Bulkhead fitting M10x100 - M10x100		37.80	Couple court 14x69	21.00		37.60		
Bump stop		32.01	Courroie accessoire	16.00	Fusée ARD	33.00		
Bump stop-Ohlins	34.01	Cpateur température eau	17.00	Fusée ARG	33.00			
Butée embrayage "série"	20.00	Crossmember-Front	31.00	G	Glace de custode D	54.00		
C	Cablage adaptation + interrupteurs	81.10			31.01	Glace de custode G	54.00	
		81.11	Culasse "série"		11.20	Glace de porte D	54.00	
	Cablage lève vitre	80.00	D		32.01	Glace de porte G	54.00	
	Cablage rampe de phares	81.10	@Diffuseur habitacle	59.30	GMV pour radia 7711162739	19.00		
		81.11	Disque de frein AV Ø280	31.40	Goujon roue AR	33.00		
	Cable commande de vitesses "passage"	38.00	Door LH	48.00	Goujon support BV	19.80		
	Cable commande de vitesses "sélection"	38.00	Door RH	48.00	Grease	32.01		
	Cale de crémaillère	36.00	Door striker	48.50	Grommet	12.50		
	Cale de volant Ep: 5mm	36.00	Driveshaft-LH	29.00	Grommet M10x100-3/8x24	37.80		
	@Cale pentée 1°	33.00	Driveshaft-RH	29.00	Grommet M10x100-Dash 3	37.80		
	@Cale pentée 10 '	33.00	E	Ecrou frein H emb. M12	31.10	H	Harnais Sabelt logo RS 2011	59.30
	@Cale pentée 20 '	33.00			33.00	H Bolt M12-120 cl:12.9	33.00	
	@Cale pentée 30 '	33.00		Ecrou Frein Simmonds M5 5PH135M	37.80	H Bolt M12-75 cl:10.9	34.00	

PARTS ALPHABATIC INDEX

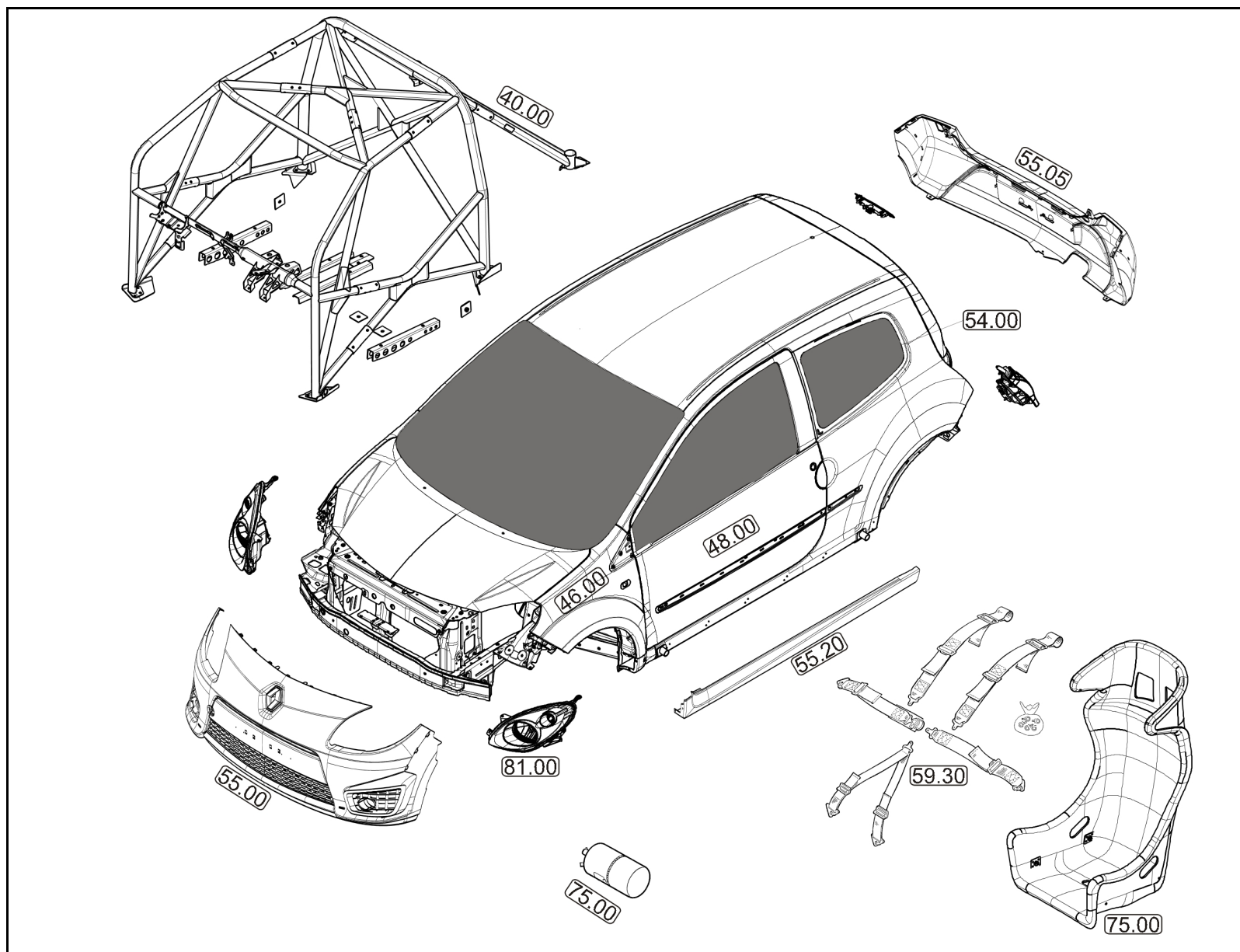
Description	Boards	Description	Boards	Description	Boards
H Bolt M12x125-30	31.40		81.11	Seal	37.60
H Bolt M8-20	31.00	Phare de virage	81.10	Seal Bilstein	32.01
	31.01		81.11	Seal Ø10x14x2	37.80
Hose	12.50	Pipe de remplissage réservoir	12.50	Serrure D	48.50
Hose clip Ø29.5x16	12.50	Plain washer Ø10x26x3	75.00	Serrure G	48.50
I Injector	12.50	Plain washer Ø6xØ121.2	32.00	Shaft	37.60
Intermediate pipe	19.50	®Plaque de lest 1.5kg	75.00	Sheet of foam	31.00
Interrupteur	81.10	Plaque support calculateur ABS	17.00		31.01
	81.11	®Plaquettes AR Carbonne lorraine RC5	33.00	Shock absorber-Rear	34.00
J ®Jambe de force Gauche TERRE	32.01	Plaquettes AV Asph "Carbonne lorraine"	31.40		34.01
Jauge essence	12.50	RC6		Silentbloc	34.01
Joint boîtier sortie eau	11.20	Plaquettes AV Terre "Carbonne lorraine"	31.40	Spacer	32.01
K Kit fiabilisation BV	21.00	RC5		Spacer-Bump rubber 5 mm	32.01
Kit Halogène complet	81.11	Platform	32.01	Spacer-Filter housing	34.01
Kit phares de virages	81.10	Poignée de porte extérieure D	48.50	Spark plug	17.00
Kit phares de virages Halogène	81.11	Poignée de porte extérieure G	48.50	Spring Front – Tarmac - Blue 3 Bandes	32.01
Kit rampe de phares	81.10	Poignée de porte intérieure D	48.50	Rouges- R=5.5 Kg	
Kit rampe de phares Halogène	81.11	Poignée de porte intérieure G	48.50	Spring - Rear	34.00
Kit trappe de toit	59.30	Pressure sensor	12.50	Spring Rear – Tarmac – Black 1 bande	34.01
L Lampe halogène	81.11	Projecteur AVD	81.00	rouge - R=5.5 Kg	
Levier équipé origine	38.00	Projecteur AVG	81.00	Spring seat	34.01
LH Front brake caliper	31.40	Protection rotule D	31.40	Spring seat-Lower	32.01
LH Rear brake caliper	33.00	Protection rotule G	31.40	Spring seat-Upper	32.01
Limiteur de frein Béringer	37.80	R Raccord rapide D6	12.50	starter motor	16.00
Locknut M12x125	31.10	Radiateur eau avec clim	19.00	Steering wheel hub	36.00
Locknut M8	37.60	Radiateur eau sans clim	19.00	Sticker "twingo R1" console centrale	80.00
M Master Cylinder	37.60	Rampe de phares	81.10	Subframe	31.01
Master Relay	80.00		81.11	Support commande ouverture de porte Dt	48.50
Mounting bracket-Sensor	33.00	Rear aerofoil	55.20	Support commande ouverture de porte G	48.50
Mounting-Brake limiter	37.80	Rear light-LH	81.00	Support D phare de virage	81.10
Mounting-Gearbox	19.80	Rear light-RH	81.00		81.11
Mousse étanche	48.50	Rear window	54.00	Support ext. baquet grand pilote	75.00
Mousse Lifeline Ø45 L=600	40.00	Réceptacle Camloc	81.10	Support ext. baquet petit pilote	75.00
Moyeu de roue AV	31.40		81.11	Support Ext baquet Copilote (Ep : 6mm	75.00
Moyeu disque AR	33.00	Relay	81.10	Alu)	
N Nut	34.01		81.11	Support G phare de virage	81.10
Nut FIH-underneath M14X150	32.00	Reniflard mise à l'air libre	12.50		81.11
	32.01	Reservoir	37.60	Support int. baquet grand pilote	75.00
Nut HM16x100	37.80	Ressort AV "cup"	32.00	Support int. baquet petit pilote	75.00
Nut M10x100	32.01	Retaining clip	37.80	Support Int baquet Copilote (Ep : 6mm Alu)	75.00
Nut M20x150 fix. transmission	33.00	RH Rear brake caliper	33.00	T T	12.50
Nut-SIMMONDS 10PH135M	32.00	Rivet Ø 4.8x12	48.50	Tailgate	48.00
Nut-Strut leg M62x1,5	32.01	Rollcage R1	40.00	Top engine beam	19.80
Nut-underneath M8	37.60	Rondelle pour goujon support BV	19.80	Train AR "origine"	33.00
O Oxygen probe	17.00	®Roof vent	59.30	Triangle origine D	31.10
P Palier D de TAR modifié	33.00	Roulement de roue AV	31.40	Triangle origine G	31.10
Palier G de TAR modifié	33.00	S Sangle roue de secours 3 fix	35.00	Tube sortie échappement	19.50
Panneau porte alu Dt	48.50	Screw	33.00	Tuyau dépression	37.60
Panneau porte alu G	48.50	Screw CBLX M6	48.50	Tuyau flexible étriers AR	37.80
Pare brise	54.00	Screw CHC10-25	75.00	Tuyau flexible passe cloison AR / tuyau	37.80
Patins pédales aluminium	36.00	Screw FX M8x125-14 cl : 8.8	31.40	étriers frein AR	
Phare de pointe	81.10	Screw HM 12x175-100 CL 12.9	31.10	Tuyau flexible passe cloison roue / étrier	37.80

PARTS ALPHABATIC INDEX

	Description	Boards	Description	Boards	Description	Boards
	AVG et AVD					
	Tuyau flexible pression essence	12.50				
	Tuyau rigide MC frein AR / passe cloison	37.80				
	AV					
	Tuyau rigide MC frein AV / raccord 4 voies	37.80				
	Tuyau rigide passe cloison AV / entrée	37.80				
	limiteur					
	Tuyau rigide pour limiteur / raccord 3 voies	37.80				
	Tuyau rigide raccord 3 voies AR / passe	37.80				
	cloison AR					
	Tuyau rigide raccord 4 voies / passe cloison	37.80				
	roue AVD					
	Tuyau rigide raccord 4 voies / passe cloison	37.80				
	roue AVG					
U	ump stop-Bilstein	32.01				
	Upright-Front LH	31.40				
	Upright-Front RH	31.40				
V	Valve de roue (lot de 5 pièces)	35.00				
	Vis banjo acier M10x100	37.80				
	Vis CBHC M5-15	37.80				
	Vis CBHC M6-12	31.40				
		37.80				
	Vis centrale fixation moyeu de volant sur	36.00				
	colonne					
	Vis fix. pipe remplissage	12.50				
	Vis fixation gache de porte	48.50				
	VIS H Emb M14x150-60 cl:10.9	32.00				
		32.01				
	Vis H emb M6	17.00				
	Vis H Emb RDL M10-40	31.00				
		31.01				
	Volant de direction Ø330 tulipage 20mm	36.00				
	Sabelt					
W	Washer	19.80				
		34.00				
	Washer 12x24x1.8	31.10				
		33.00				
	Washer-Spring seat retention	34.01				
	Washer SPS Ø6	31.40				
		34.01				
	Washer Ø10x22	75.00				
	Washer Ø8x18 ép:1.4	31.00				
		31.01				
		75.00				
	Water temperature sensor	11.20				
	Wheel 6.5x15" ET:50	35.00				
	Wheel nut M12x150-25 cone60°	31.40				
		33.00				
		35.00				
	Wheel stud	31.40				
	Wiring loom-Master switch	80.00				



Mechanical - avr.-2013



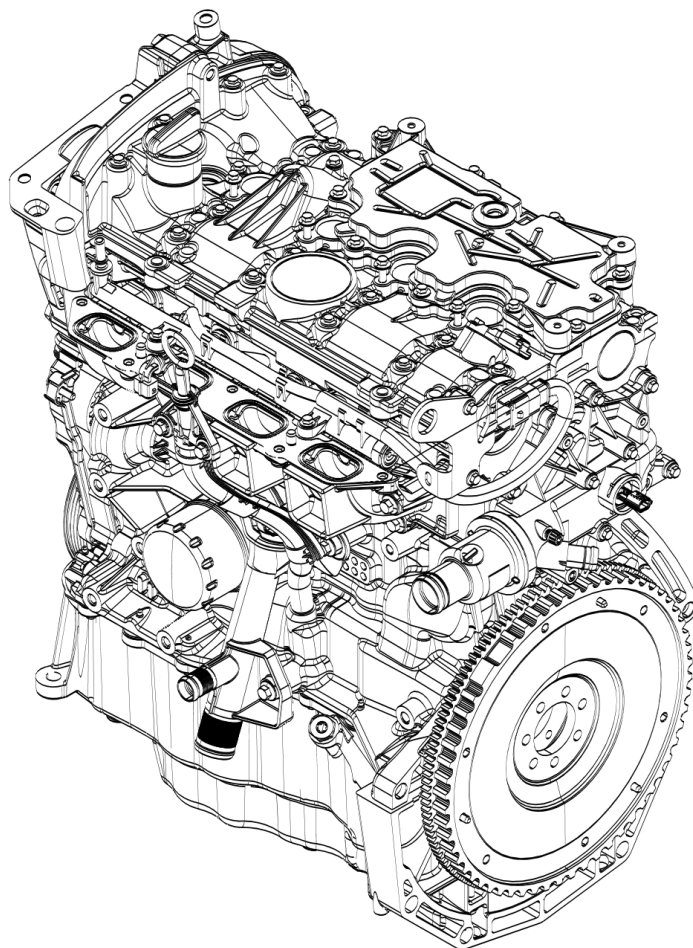
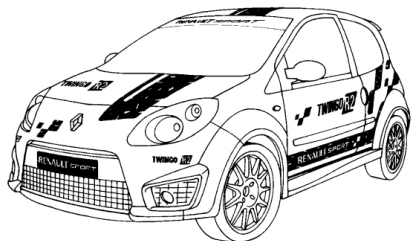
Bodywork - mars-2011



TWINGO R1



10.00



Rep.	Reference	Description	Coef
	77 11 162 911	Engine K4M854 "série"	1



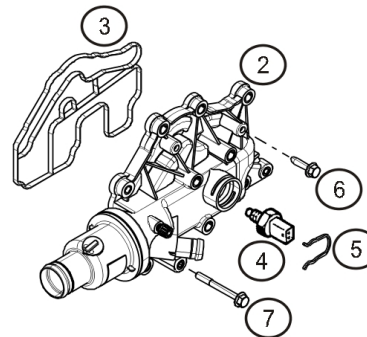
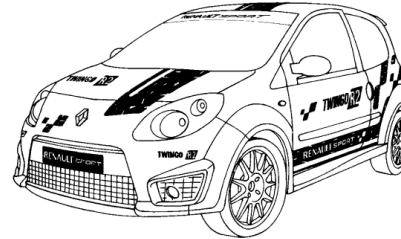
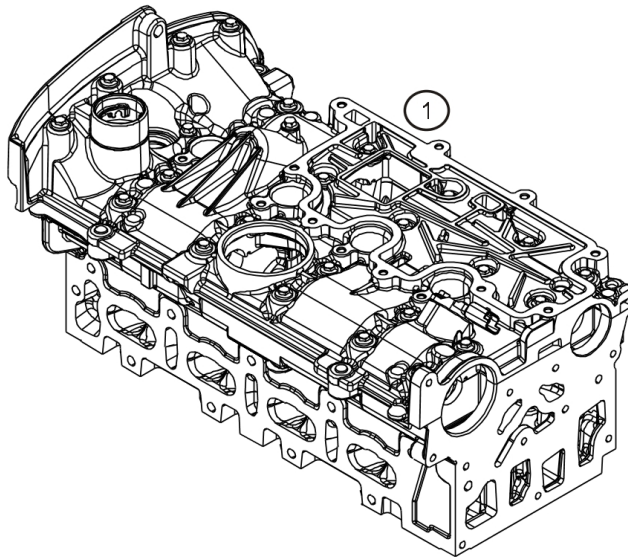
RENAULT SPORT

juin-2010



RENAULT

10.00

**TWINGO R17****11.20**

Rep.	Reference	Description	Coef
1	77 11 162 963	Culasse "série"	1
2	77 11 162 845	Boitier sortie eau sans calorstat	1
3	82 00 029 741	Joint boitier sortie eau	1
4	77 11 160 420	Water temperature sensor	1
5	77 00 111 502	Agrafe capteur	1
6	77 03 602 272	Collar screw H M6-25	1
7	77 03 002 917	Collar screw H M6	1

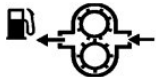


RENAULT SPORT

mars-2011



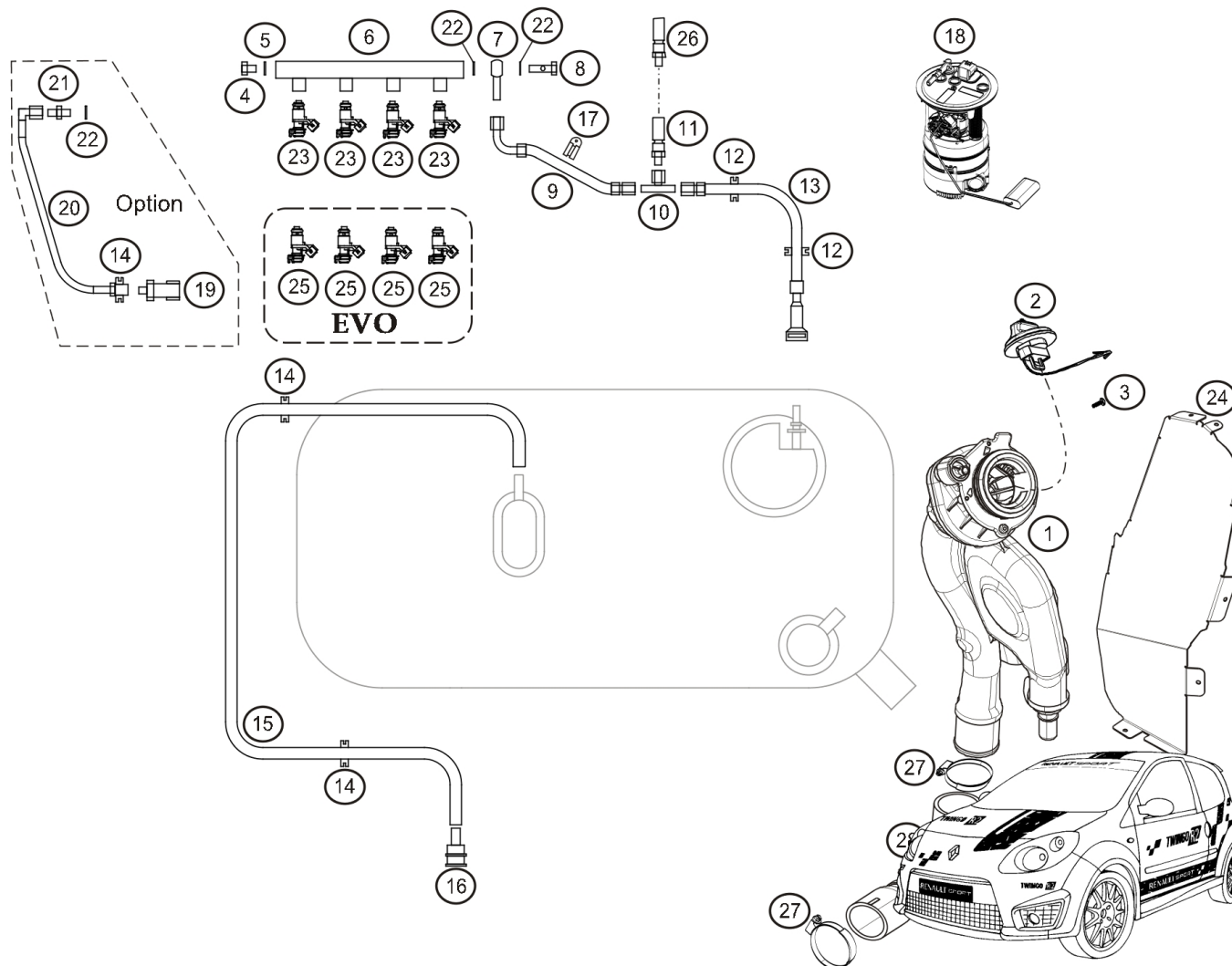
RENAULT



TWINGO R1



12.50



Rep.	Reference	Description	Coef
1	77 11 162 848	Pipe de remplissage réservoir	1
2	77 00 431 898	Fuel tank filler cap	1
3	77 03 017 088	Vis fix. pipe remplissage	3
4	77 11 160 200	Fuel rail cap M12x150:314-M12	1
5	79 03 062 105	Copper washer Ø12x18 ép:2	3
6	® 77 11 162 706	Fuel rail	1
7	77 11 160 198	Banjo	1
8	77 11 160 199	Banjo bolt	1
9	77 11 160 195	Flexible de carburant Té vers rampe	1
10	77 11 128 371	T	1
11	77 11 158 240	Raccord rapide D6	1
12	77 11 156 508	Hose clip Ø29.5x16	4
13	77 11 160 196	Flexible de carburant réservoir vers Té	1
14	77 11 160 805	Grommet	2
15	77 11 162 707	Hose	1
16	77 11 160 737	Reniflard mise à l'air libre	1
17	77 11 160 201	Cavalier maintient tuyau sur bloc	1
18	77 11 162 901	Jauge essence	1
19	77 11 158 514	Pressure sensor	1
20	77 11 160 962	Tuyau flexible pression essence	1
21	77 11 160 725	Adaptator M12x150 Dash3	1
25	77 11 162 904	Injector	4



janv.-2014



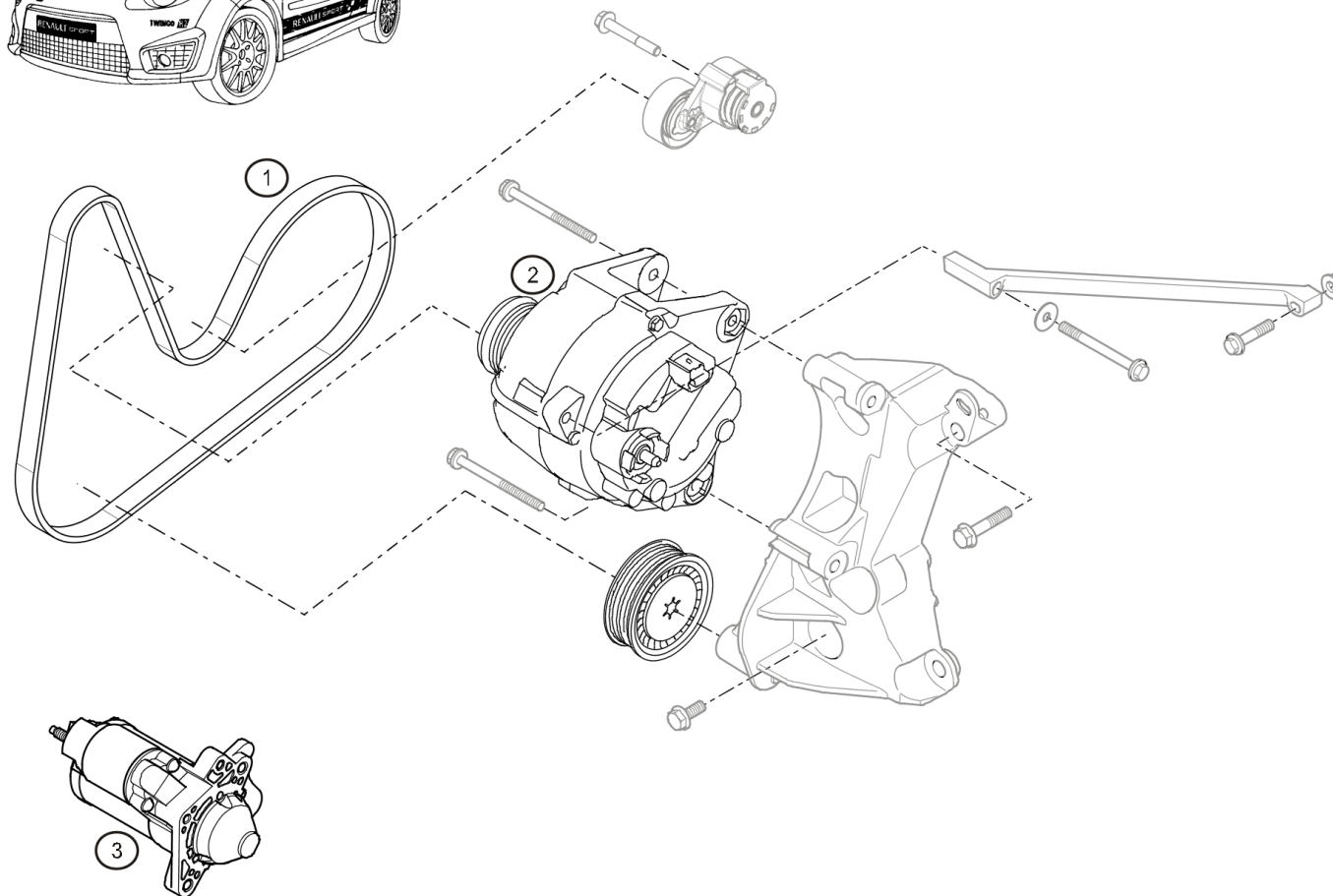
RENAULT SPORT



TWINGO R1



16.00



Rep.	Reference	Description	Coef
1	82 00 821 813	Courroie accessoire	1
2	77 11 162 920	Alternator	1
3	77 11 162 915	starter motor	1



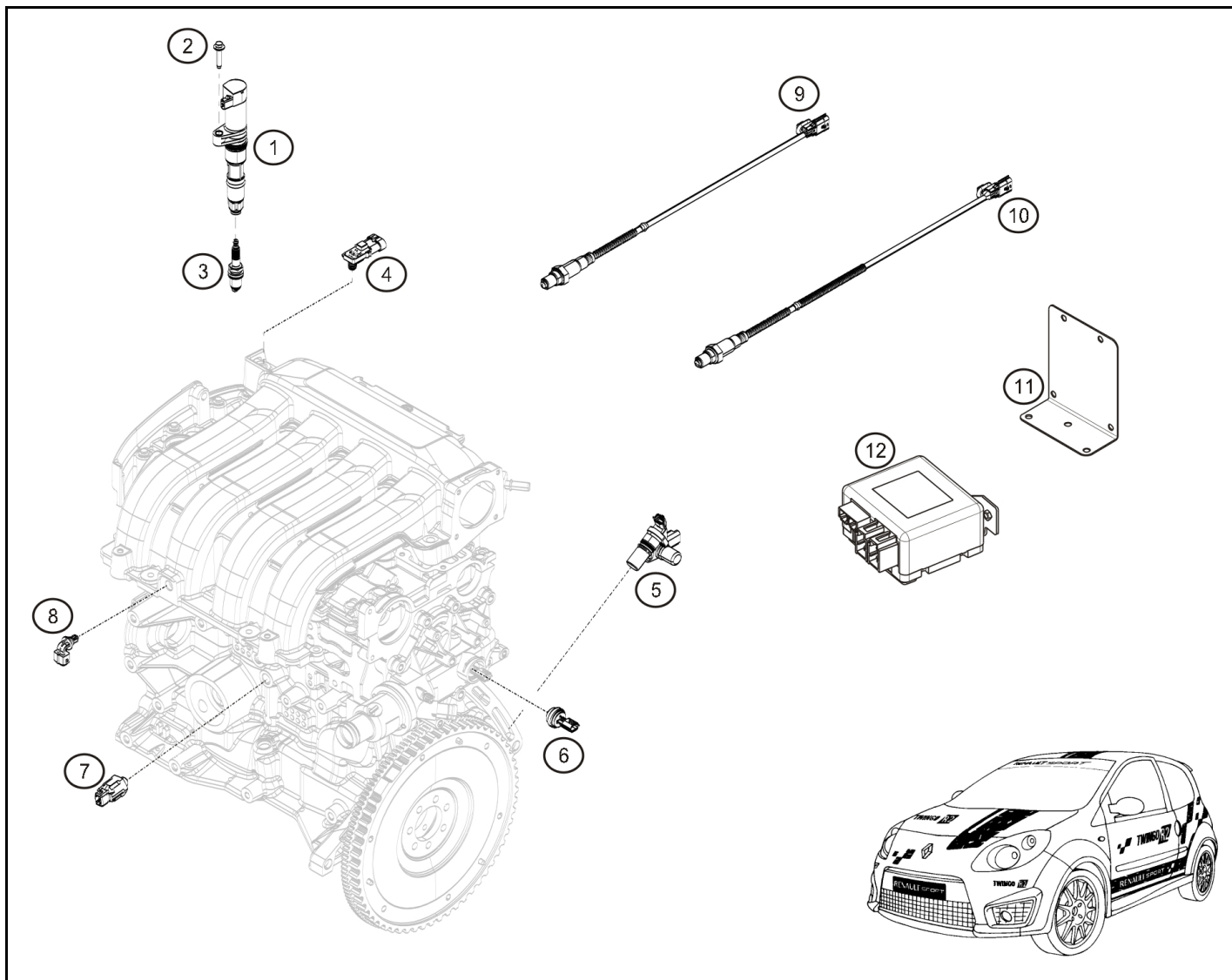
RENAULT SPORT

mai-2013



RENAULT

16.00

**TWINGO R1****R1****17.00**

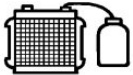
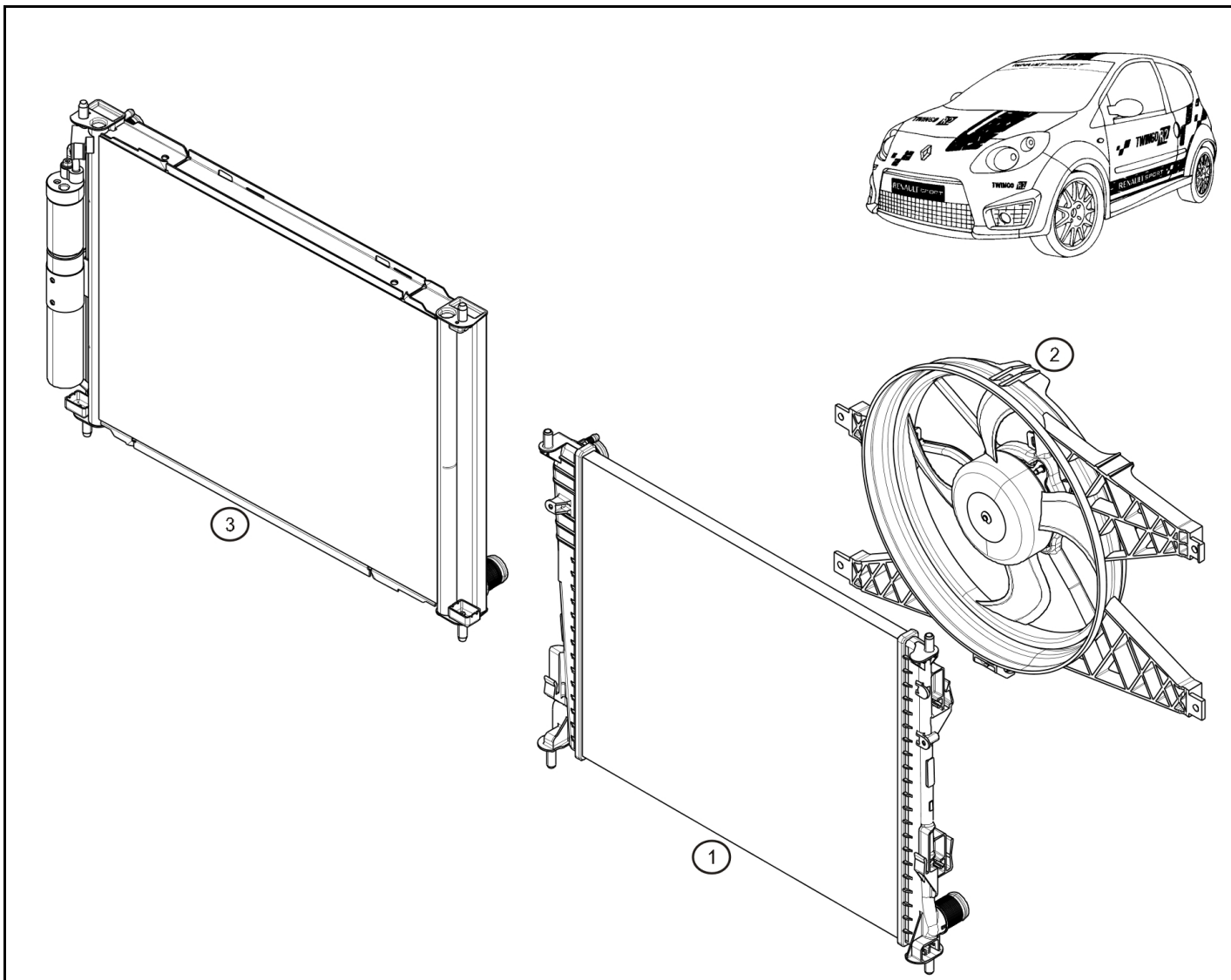
Rep.	Reference	Description	Coef
1	82 00 568 671	Bobine allumage	4
2	77 03 020 041	Vis H emb M6	4
3	82 00 492 426	Spark plug	4
4	77 11 155 392	Air pressure sensor	1
5	77 11 162 827	Engine speed sensor	1
6	77 11 162 900	Cpateur température eau	1
7	82 00 680 689	Capteur cliquetis	1
8	77 11 155 393	Capteur température air	1
9	82 00 940 054	Capteur oxygène	1
10	82 00 650 085	Oxygen probe	1
11	77 11 162 891	Plaque support calculateur ABS	1
12	77 11 162 969	computer	1



RENAULT SPORT

déc.-2011

**17.00**

**TWINGO R1****R1****19.00**

Rep.	Reference	Description	Coef
1	77 11 162 739	Radiateur eau sans clim	1
2	77 11 162 740	GMV pour radia 7711162739	1
3	77 11 163 974	Radiateur eau avec clim	1



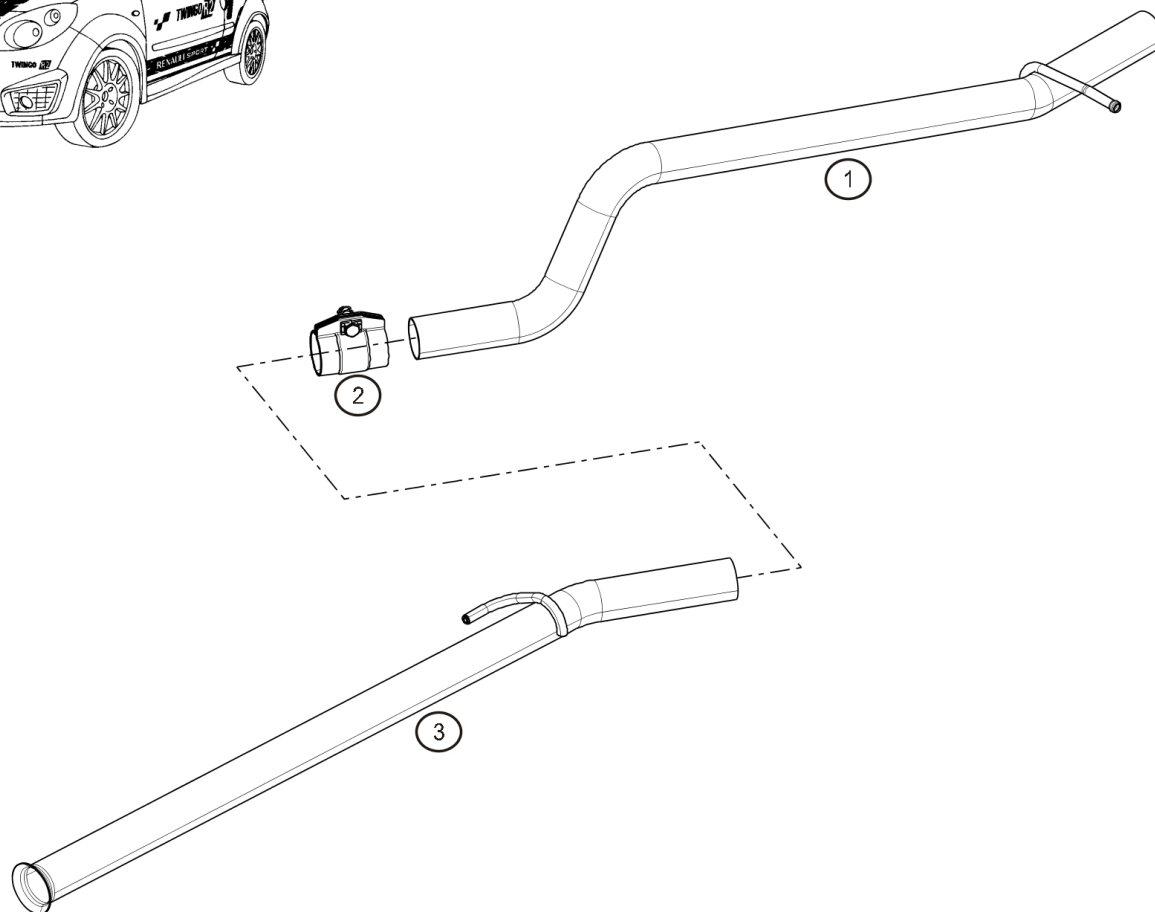
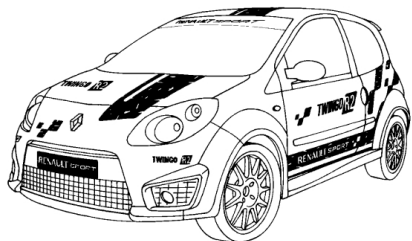
RENAULT SPORT

avr.-2012



RENAULT

19.00

**TWINGO R1****R1****19.50**

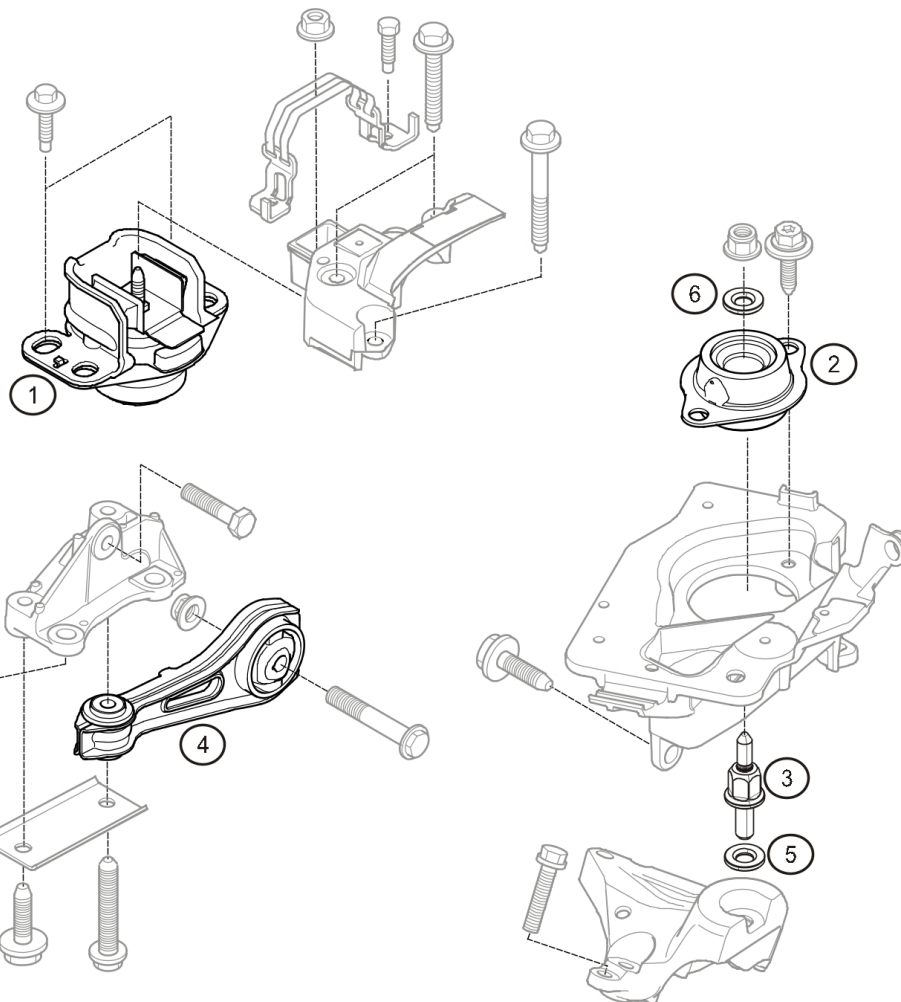
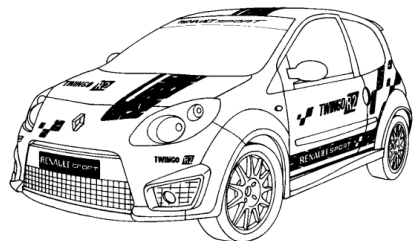
Rep.	Reference	Description	Coef
1	77 11 162 852	Tube sortie échappement	1
2	82 00 504 652	Exhaust collar	1
3	77 11 167 570	Intermediate pipe	1



RENAULT SPORT

déc.-2011

**19.50**

**TWINGO R1****19.80**

Rep.	Reference	Description	Coef
1	77 11 167 342	Top engine beam	1
2	77 11 167 340	Mounting-Gearbox	1
3	77 11 167 568	Goujon support BV	1
4	77 11 167 343	Biellette de reprise de couple	1
5	77 11 167 569	Rondelle pour goujon support BV	1
6	77 11 167 648	Washer	1



RENAULT SPORT

avr.-2013



RENAULT

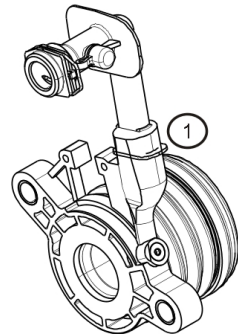
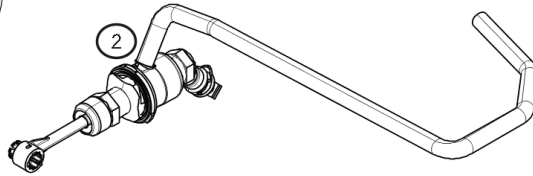
19.80



TWINGO R1



20.00



Rep.	Reference	Description	Coef
1	77 11 162 660	Butée embrayage "série"	1
2	77 11 162 925	Emetteur embrayage	1



RENAULT SPORT

avr.-2011



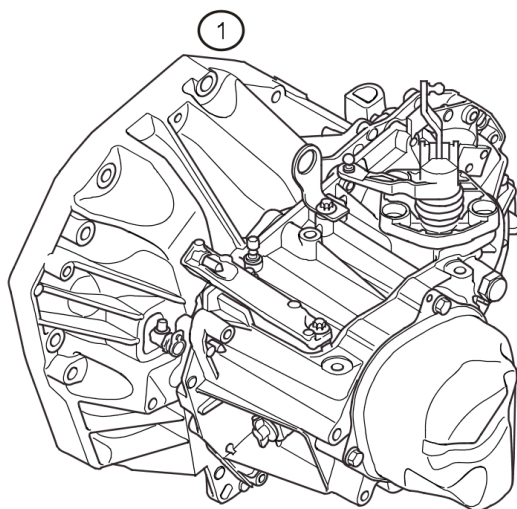
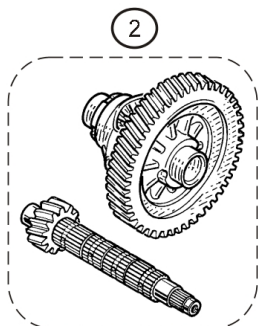
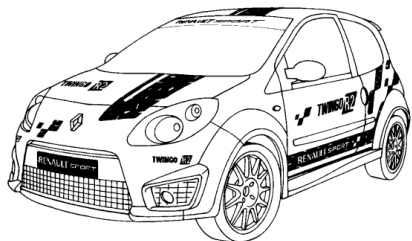
20.00



TWINGO R1



21.00



Rep.	Reference	Description	Coef
1	77 11 167 200	Boite de vitesses couple court 14x69	1
2	77 11 162 892	Couple court 14x69	1
3	77 11 163 972	Kit fiabilisation BV	1



RENAULT SPORT

avr.-2012



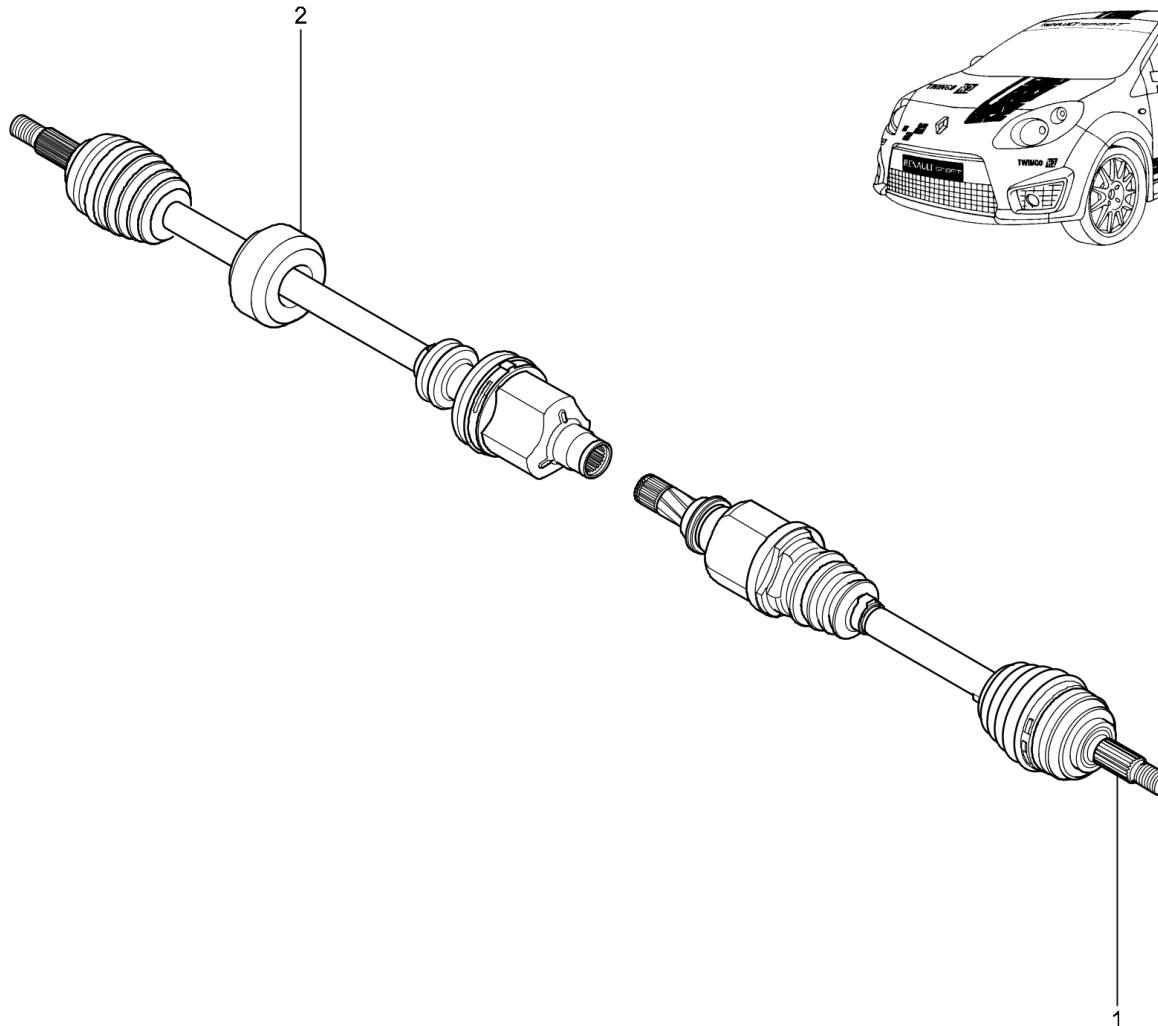
21.00



TWINGO R17



29.00



Rep.	Reference	Description	Coef
1	77 11 167 335	Driveshaft-LH	1
2	77 11 167 336	Driveshaft-RH	1

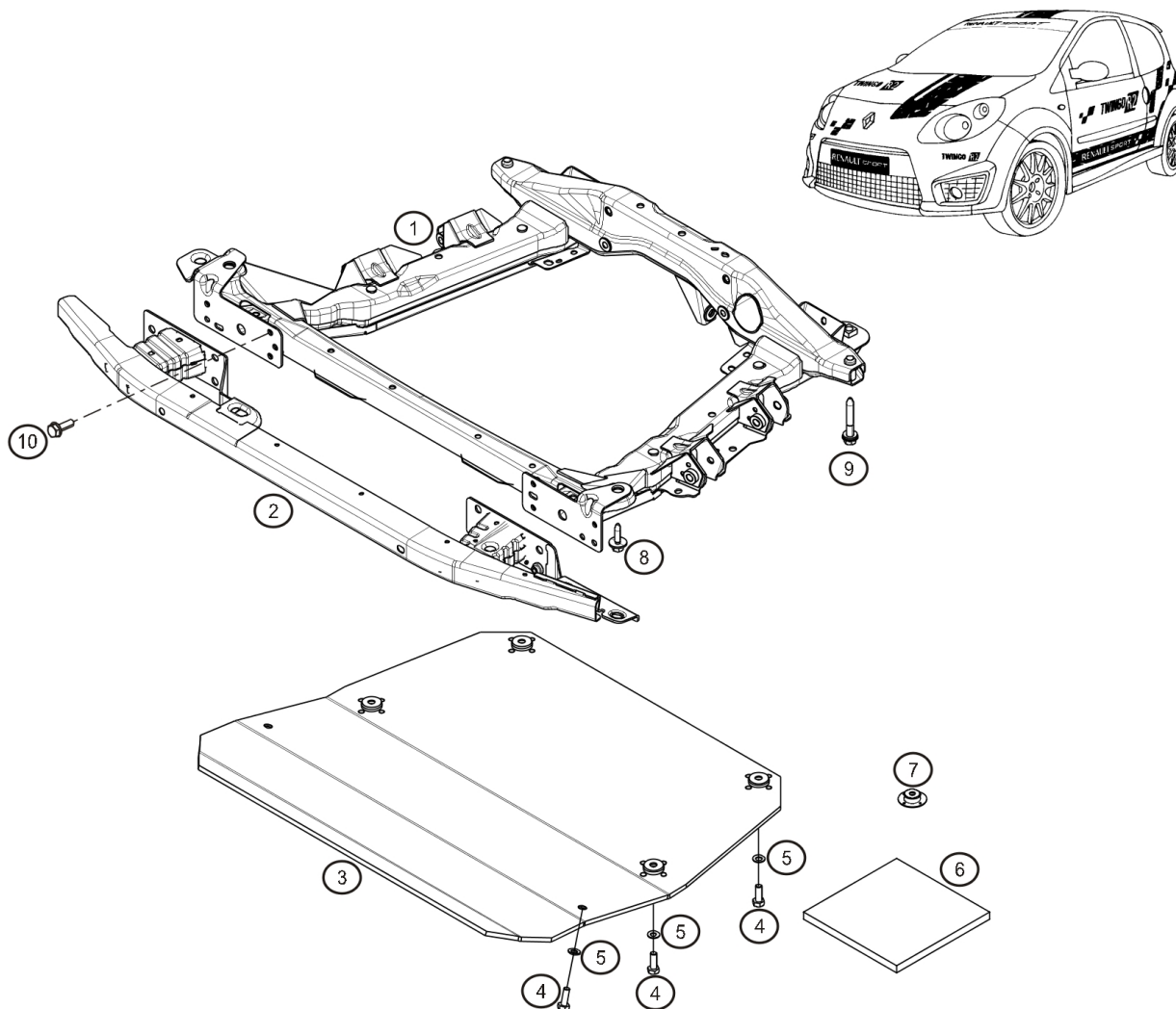


mars-2011



RENAULT SPORT

29.00

**TWINGO R1****31.00**

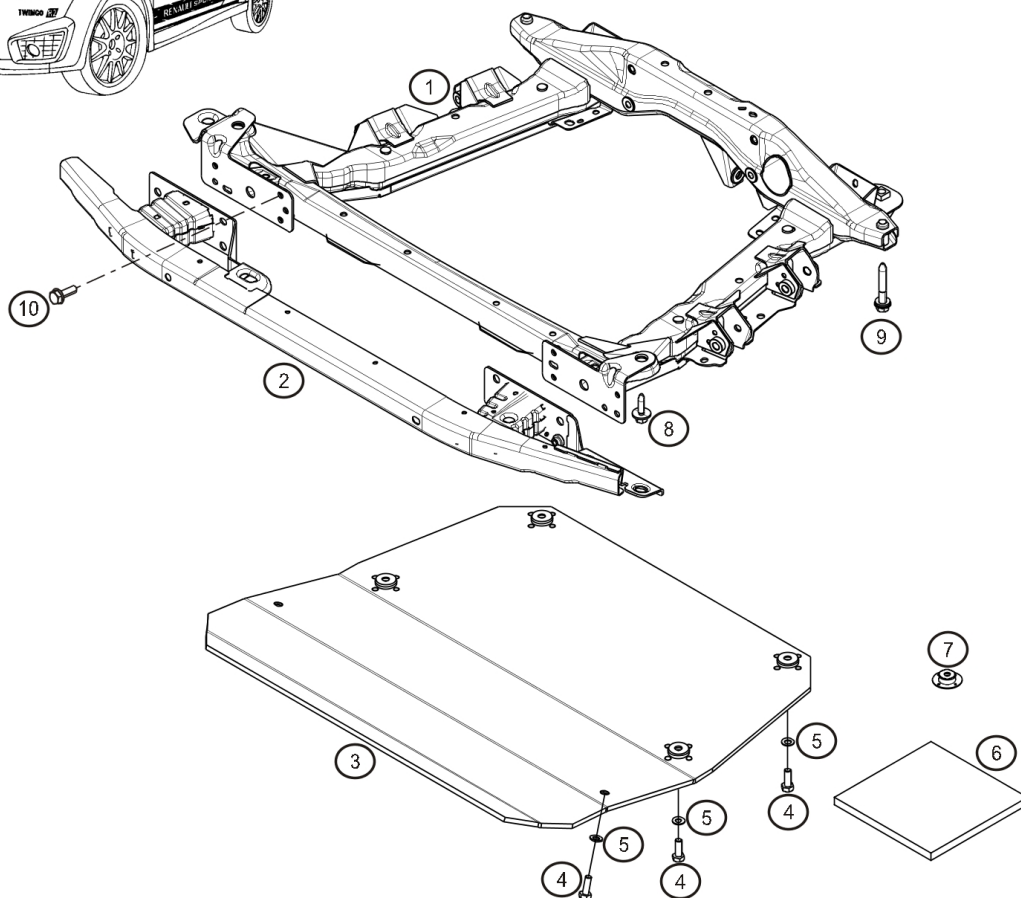
Rep.	Reference	Description	Coef
1	77 11 167 488	Engine subframe	1
2	77 11 162 921	Crossmember-Front	1
3	82 01 437 601	Carenage sous moteur	1
4	77 11 128 167	H Bolt M8-20	4
5	77 11 156 945	Washer Ø8x18 ép:1.4	4
6	77 11 156 617	Sheet of foam	1
7	77 11 162 085	Canon de centrage pour carénage Ep:8mm	4
8	77 03 602 187	Vis H Emb RDL M10-40	2
9	77 03 602 221	Collar screw H M12	2
10	77 03 602 211	Collar screw H M8-25	1



RENAULT SPORT

avr.-2013

**31.00**

**TWINGO R1****31.01**

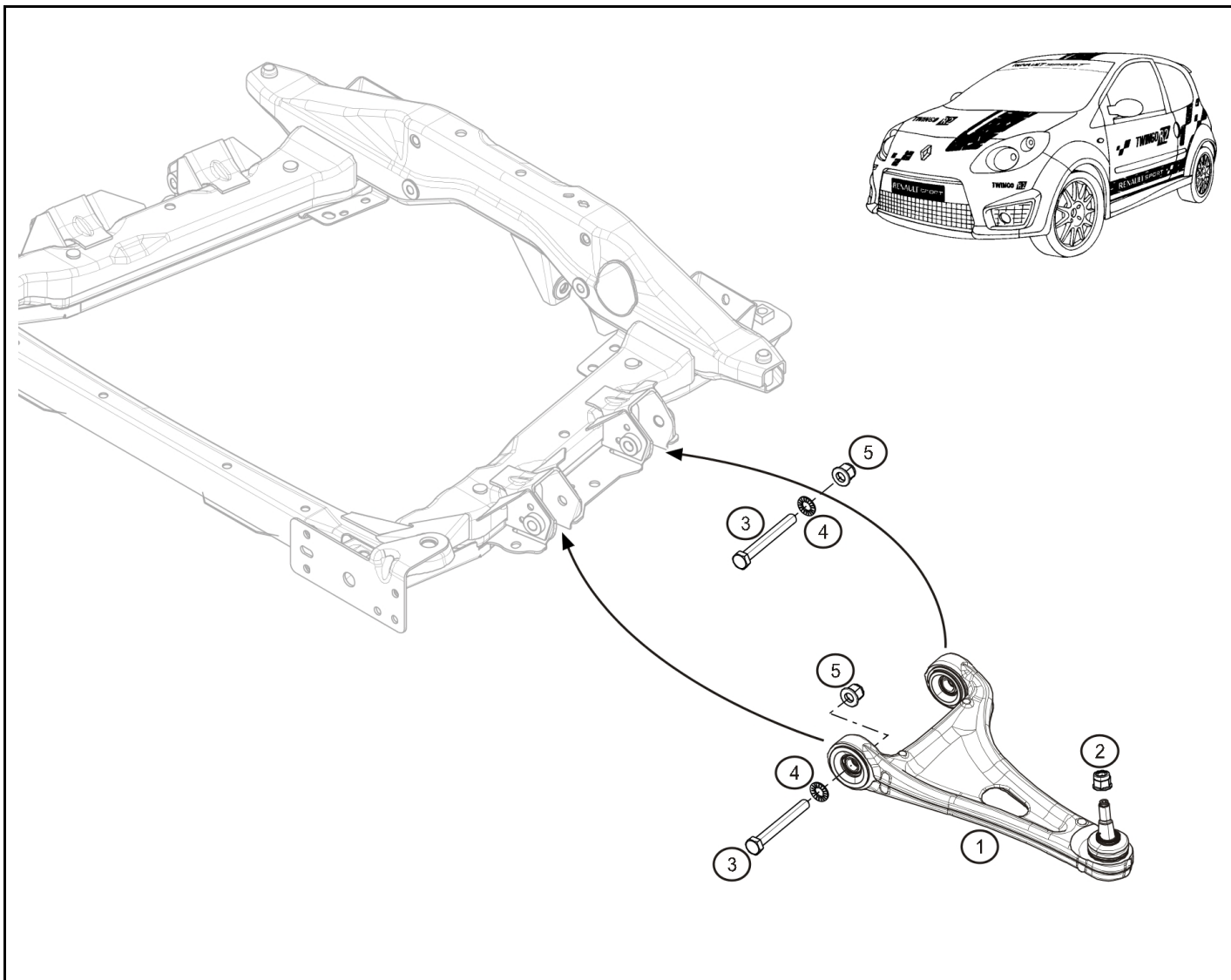
Rep.	Reference	Description	Coef
1	77 11 162 781	Subframe	1
2	77 11 162 921	Crossmember-Front	1
3	82 01 437 601	Carenage sous moteur	1
4	77 11 128 167	H Bolt M8-20	4
5	77 11 156 945	Washer Ø8x18 ép:1.4	4
6	77 11 156 617	Sheet of foam	1
7	77 11 162 085	Canon de centrage pour carénage Ep:8mm	4
8	77 03 602 187	Vis H Emb RDL M10-40	2
9	77 03 602 221	Collar screw H M12	2
10	77 03 602 211	Collar screw H M8-25	1



RENAULT SPORT

avr.-2013



**TWINGO R1****31.10**

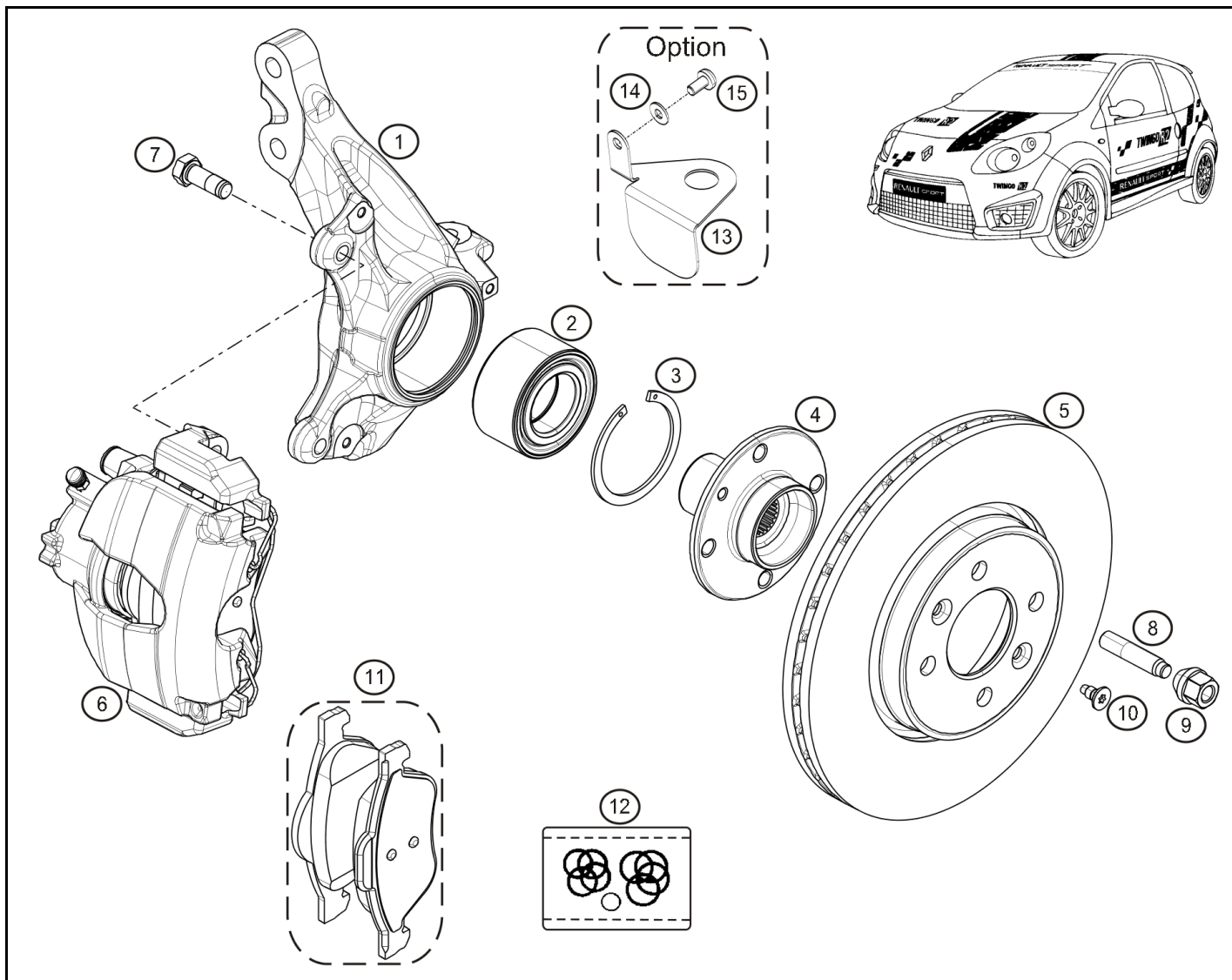
Rep.	Reference	Description	Coef
1	77 11 162 825	Triangle origine G	1
	77 11 162 826	Triangle origine D	1
2	77 03 034 274	Locknut M12x125	2
3	77 11 160 952	Screw HM 12x175-100 CL 12.9	4
4	77 11 156 931	Washer 12x24x1.8	4
5	77 03 034 248	Ecrou frein H emb. M12	4



RENAULT SPORT

mars-2011



**TWINGO R1****31.40**

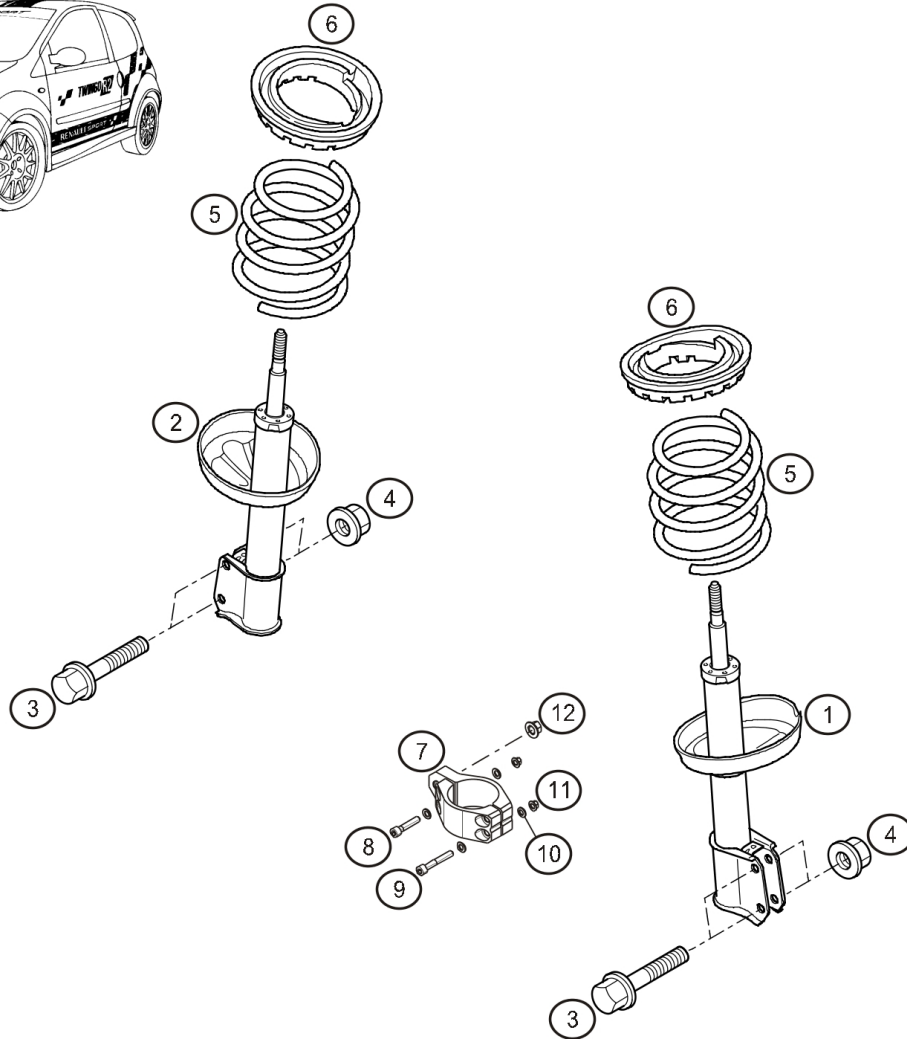
Rep.	Reference	Description	Coef
1	77 11 162 913	Upright-Front LH	1
	77 11 162 914	Upright-Front RH	1
2	77 11 162 816	Roulement de roue AV	2
3	82 00 212 521	Circlips de roulement de roue AV	2
4	77 11 162 817	Moyeu de roue AV	2
5	77 11 162 813	Disque de frein AV Ø280	2
6	77 11 162 815	LH Front brake caliper	1
	77 11 162 814	Etrier AVD	1
7	77 00 698 709	H Bolt M12x125-30	4
8	77 11 167 658	Wheel stud	8
9	77 11 167 254	Wheel nut M12x150-25 cone60°	8
10	77 03 004 128	Screw FX M8x125-14 cl : 8.8	4
11	77 11 162 804	Plaquettes AV Asph "Carbonne lorraine" RC6	1
	77 11 162 805	Plaquettes AV Terre "Carbonne lorraine" RC5	1
12	41 12 000 02R	Coll joint	1
13	77 11 162 881	Protection rotule G	1
	77 11 162 882	Protection rotule D	1
14	77 11 126 686	Washer SPS Ø6	2
15	77 11 129 246	Vis CBHC M6-12	2



avr.-2013



RENAULT SPORT

**TWINGO R1****32.00**

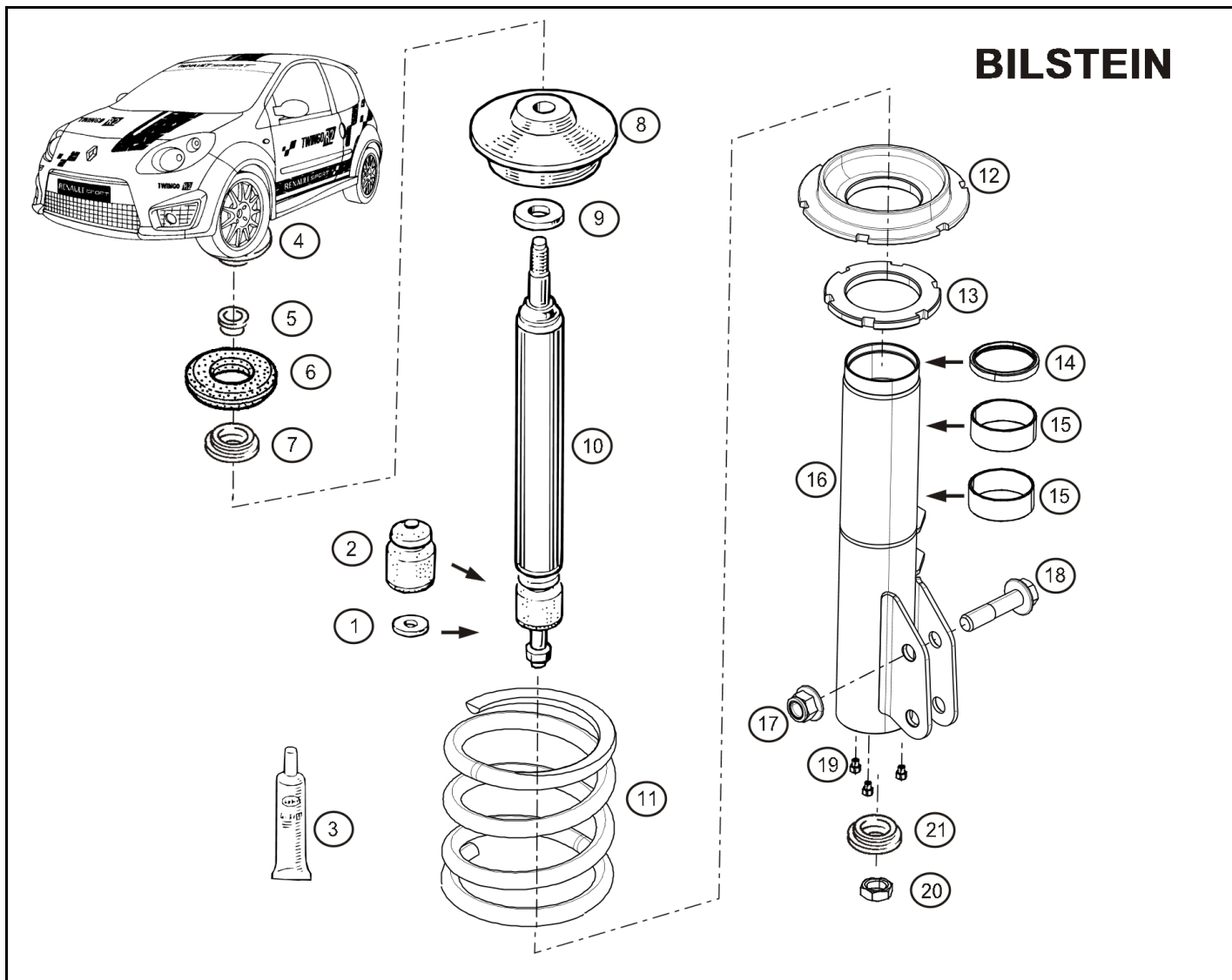
Rep.	Reference	Description	Coef
1	77 11 167 414	Amortisseur AVG	1
2	77 11 167 413	Amortisseur AVD	1
3	77 03 002 835	VIS H Emb M14x150-60 cl:10.9	4
4	77 03 034 265	Nut FIH-underneath M14X150	4
5	77 11 167 203	Ressort AV "cup"	2
7	77 11 162 895	Bride fix. biellette de BAR	2
8	77 03 009 026	CHS Bolt M6-30	4
9	77 11 156 953	CHS Bolt M6-40 cl:12.9	4
10	77 11 160 368	Plain washer Ø6xØ121.2	16
11	77 11 051 326	Ecrou frein Simmonds M6 6PH135M	8
12	77 11 065 249	Nut-SIMMONDS 10PH135M	2



RENAULT SPORT

déc.-2011

**32.00**

**TWINGO R1****32.01**

Rep.	Reference	Description	Coef
1	77 11 126 133	Spacer-Bump rubber 5 mm	2
2	77 11 129 404	ump stop-Bilstein	2
3	77 03 002 835	VIS H Emb M14x150-60 cl:10.9	4
3	77 11 157 386	Grease	1
4	77 03 034 265	Nut FIH-underneath M14X150	4
4	77 00 426 450	Platform	2
5	82 00 666 449	Spacer	2
6	60 00 073 600	Flexible mounting ring	2
7	82 00 650 172	Bump stop	2
8	77 11 126 025	Spring seat-Upper	2
9	77 11 126 026	Spacer	2
10	77 11 129 563	Damper insert Front Ø50 tarage : 240/200	2
11	77 11 068 572	Spring Front – Tarmac - Blue 3 Bandes Rouges- R=5.5 Kg	2
12	77 11 126 599	Spring seat-Lower	2
13	77 11 126 159	Nut-Strut leg M62x1,5	2
14	77 11 126 168	Seal Bilstein	2
15	77 11 156 046	Bilstein bearing	4
16	® 77 11 162 681	Jambe de force Gauche TERRE	1
19	77 11 160 787	Filtre "Legris"	6
20	77 11 068 130	Nut M10x100	2
21	82 01 425 199	Adaptator	2



RENAULT SPORT

avr.-2013

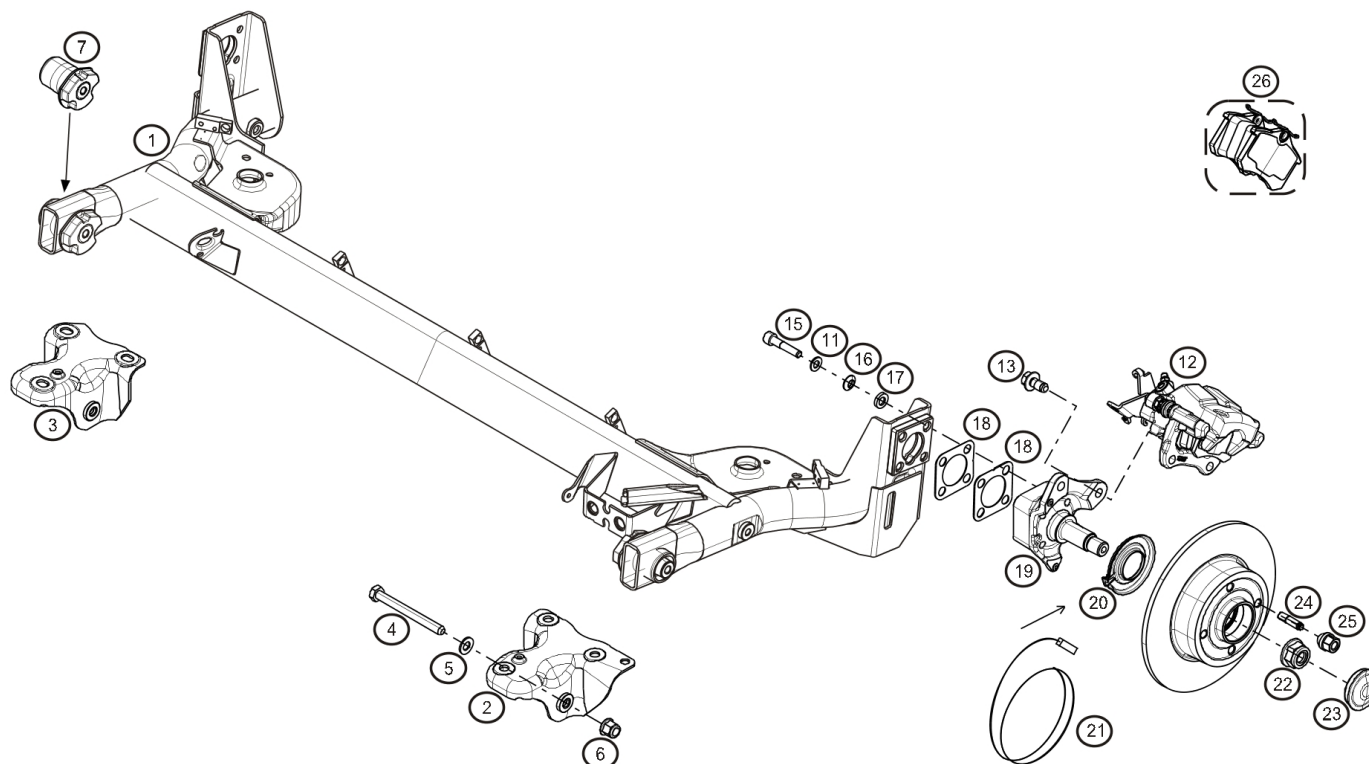
**32.01**



TWINGO R17

R17

33.00



Rep.	Reference	Description	Coef
1	77 11 162 922	Train AR "origine"	1
2	77 11 162 711	Palier G de TAR modifié	1
3	77 11 162 712	Palier D de TAR modifié	1
4	77 11 160 194	H Bolt M12-120 cl:12.9	2
5	77 11 156 931	Washer 12x24x1.8	2
6	77 03 034 248	Ecrou frein H emb. M12	2
7	60 00 073 602	Flexible joint production	2
12	77 11 162 811	LH Rear brake caliper	1
	77 11 162 812	RH Rear brake caliper	1
13	77 01 068 367	Screw	8
15	77 11 162 677	CHS Bolt M10x125-43	8
16	77 11 129 598	Convex washer	8
17	77 11 162 640	Concave washer	8
18	® 77 11 129 369	Cale pentée 10°	2
	® 77 11 129 370	Cale pentée 20°	2
	® 77 11 129 377	Cale pentée 30°	2
	® 77 11 129 371	Cale pentée 1°	2
19	77 11 162 923	Fusée ARG	1
	77 11 162 924	Fusée ARD	1
20	82 00 038 303	Mounting bracket-Sensor	2
21	77 11 162 810	Moyeu disque AR	2
21	82 00 675 990	Capteur vitesse roue	1
22	77 03 034 250	Nut M20x150 fix. transmission	2
23	82 00 649 356	Bouchon de moyeu	2
24	77 11 162 616	Goujon roue AR	8
25	77 11 167 254	Wheel nut M12x150-25 cone60°	8
26	® 77 11 167 103	Plaquettes AR Carbonne lorraine RC5	1

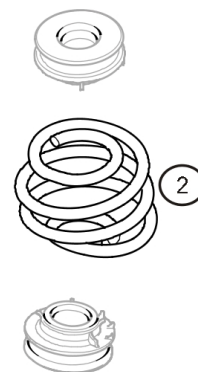
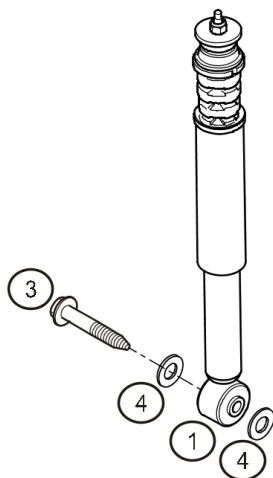
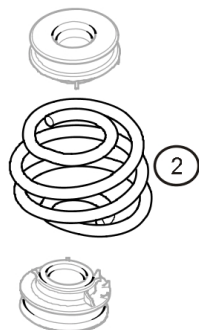
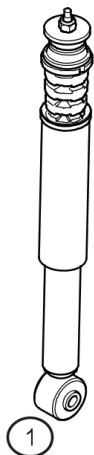


RENAULT SPORT

mai-2013



33.00

**TWINGO R1****34.00**

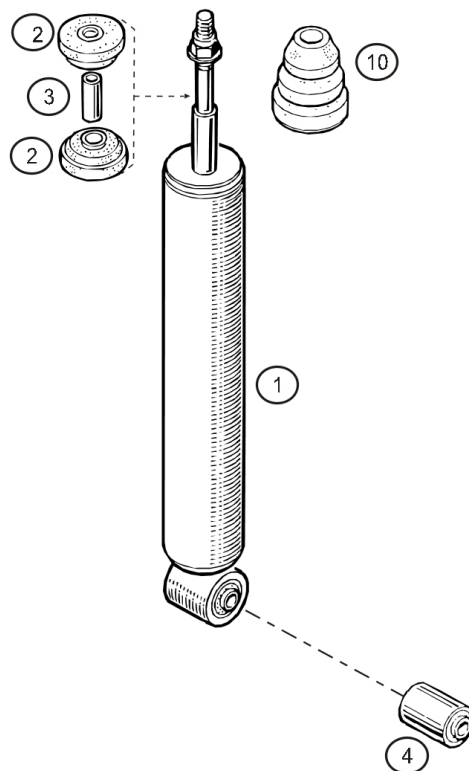
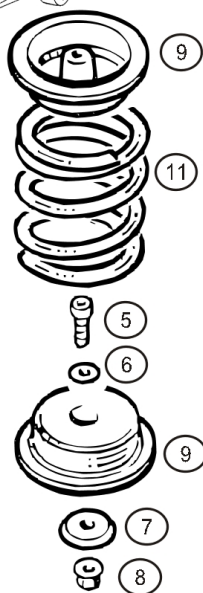
Rep.	Reference	Description	Coef
1	77 11 167 201	Shock absorber-Rear	2
2	77 11 167 202	Spring - Rear	2
3	77 03 002 951	H Bolt M12-75 cl:10.9	2
4	77 11 167 399	Washer	4



RENAULT SPORT

déc.-2011

**34.00**

**TWINGO R1****34.01****BILSTEIN**

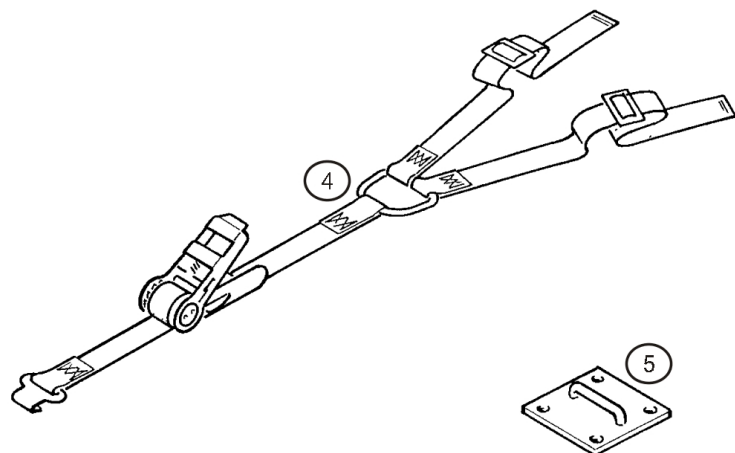
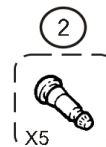
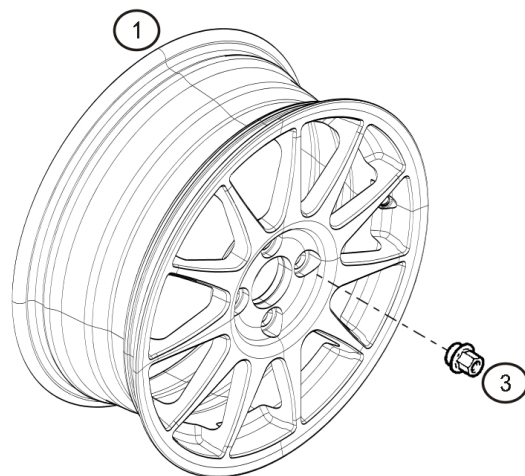
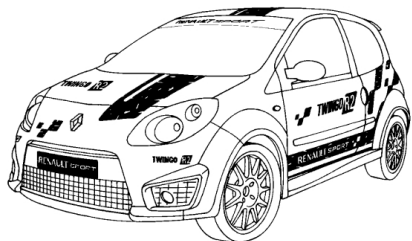
Rep.	Reference	Description	Coef
1	77 11 129 571	Shock absorber-Rear	2
2	77 11 129 373	Flexible mounting ring	4
3	77 11 129 374	Spacer-Filter housing	2
4	77 11 129 375	Silentbloc	2
5	77 11 128 925	CHS Bolt M6-20	2
6	77 11 126 686	Washer SPS Ø6	4
7	77 11 129 389	Washer-Spring seat retention	2
8	77 03 034 262	Nut	2
9	77 11 129 353	Spring seat	4
10	77 11 129 416	Bump stop-Ohlins	2
11	77 11 129 453	Spring Rear – Tarmac – Black 1 bande rouge - R=5.5 Kg	2



RENAULT SPORT

avr.-2013

**34.01**

**TWINGO R1****35.00**

Rep.	Reference	Description	Coef
1	77 11 162 780	Wheel 6.5x15" ET:50	4
2	77 11 128 118	Valve de roue (lot de 5 pièces)	1
3	77 11 167 254	Wheel nut M12x150-25 cone60°	16
4	77 11 160 795	Sangle roue de secours 3 fix	1
5	77 05 008 033	Anneau fixation sangle roue de secours	2



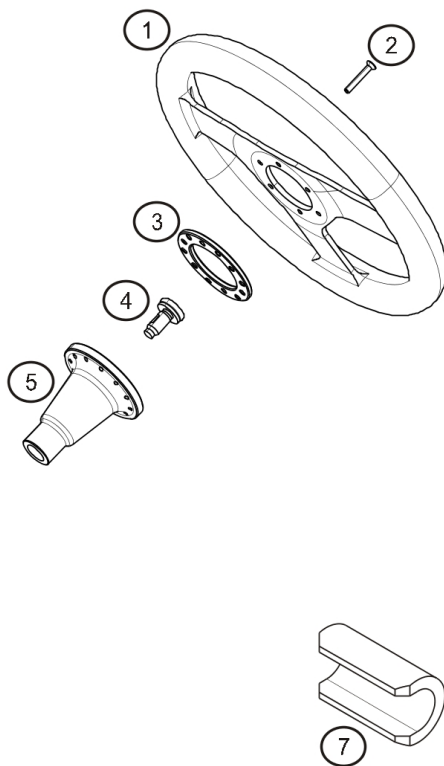
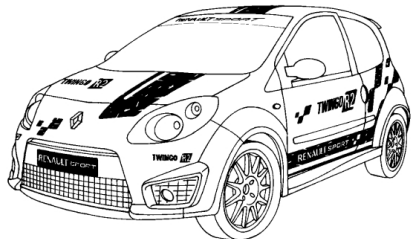
RENAULT SPORT

mars-2011



RENAULT

35.00

**TWINGO R1****36.00**

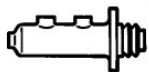
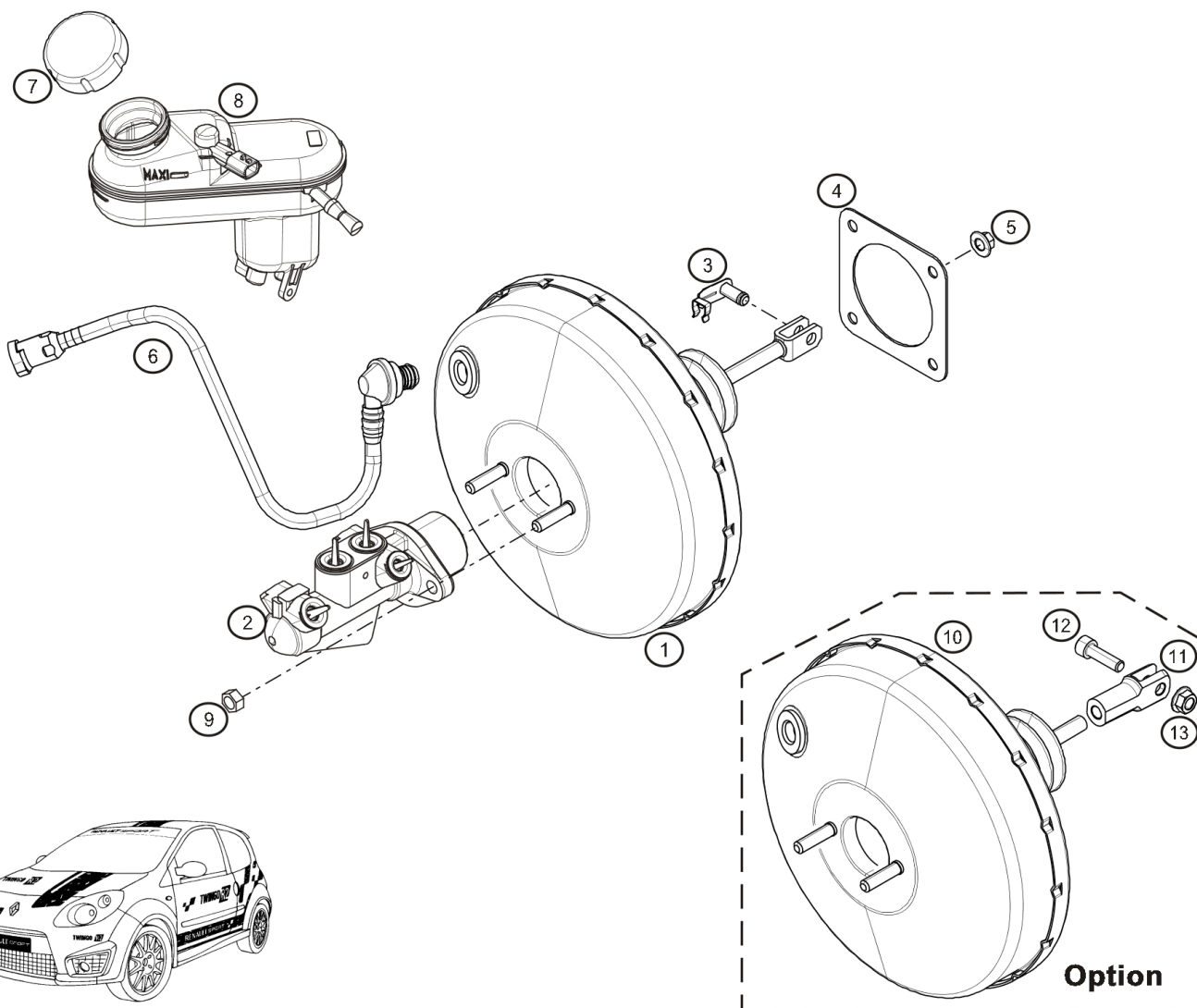
Rep.	Reference	Description	Coef
1	77 11 160 037	Volant de direction Ø330 tulipage 20mm Sabelt	1
2	77 11 160 551	FHS Bolt M5-35	6
3	77 11 160 532	Cale de volant Ep: 5mm	2
4	82 00 186 510	Vis centrale fixation moyeu de volant sur colonne	1
5	77 11 162 767	Steering wheel hub	1
6	77 11 160 185	Patins pédales aluminium	1
7	77 11 162 889	Cale de crémaillère	1



RENAULT SPORT

déc.-2011

**36.00**

**TWINGO R1****37.60**

Rep.	Reference	Description	Coef
1	82 00 675 998	Amplificateur de freinage	1
2	77 01 210 101	Master Cylinder	1
3	82 00 420 641	Shaft	1
4	77 00 839 274	Seal	1
5	77 03 033 132	Ecrou H emb M8	4
6	82 00 692 139	Tuyau dépression	1
7	82 00 205 044	Fuel tank filler cap	1
8	82 00 403 300	Reservoir	1
9	77 03 034 017	Locknut M8	2
10	77 11 162 722	Amplificateur de freinage modifié	1
11	77 11 160 977	Chape de réglage pédale de frein	1
12	77 11 156 960	CHS Bolt M8x125-40 CL 12.9	1
13	77 03 033 016	Nut-underneath M8	1

Option

RENAULT SPORT

déc.-2011

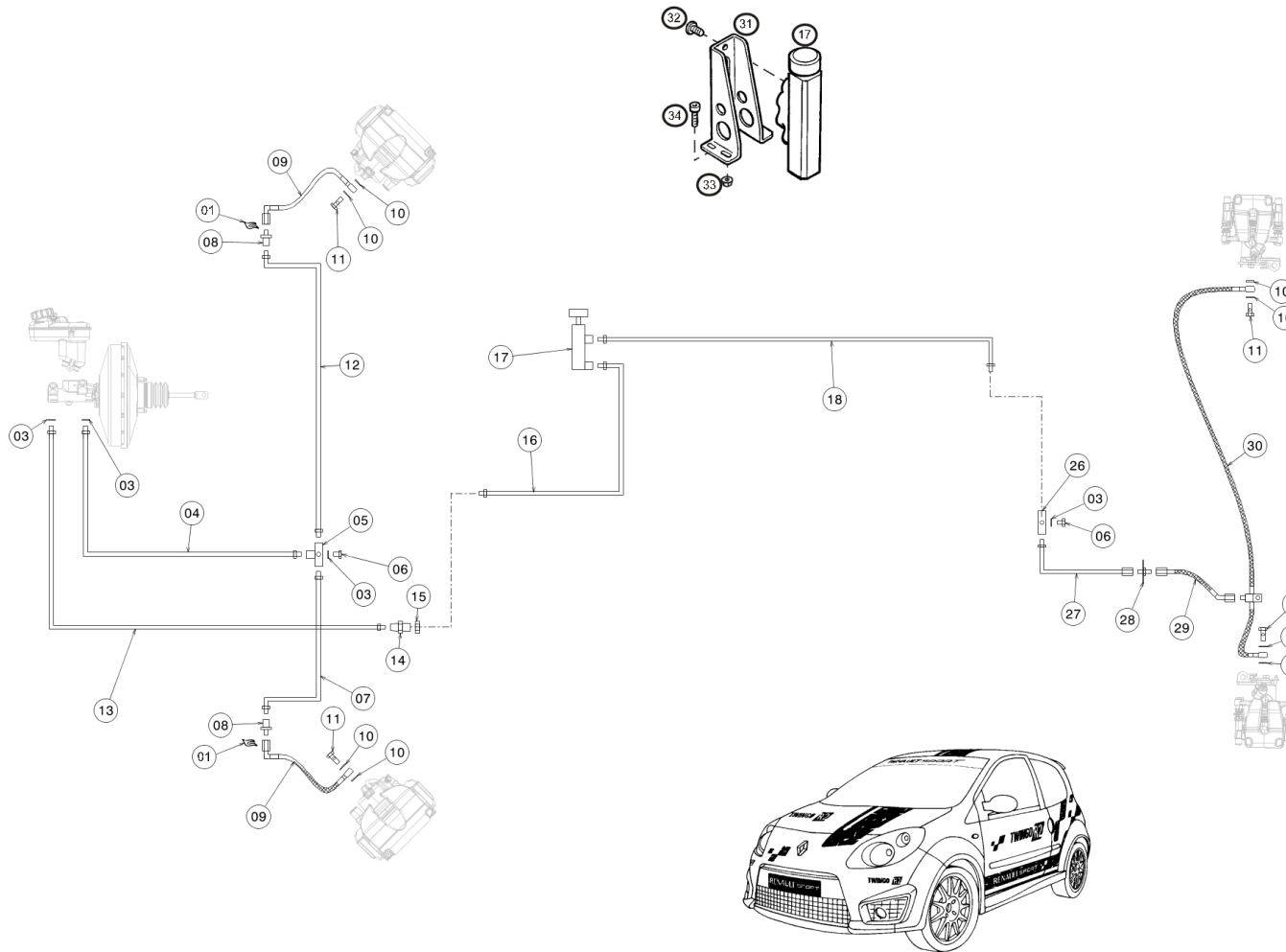
**37.60**



TWINGO R1



37.80



Rep.	Reference	Description	Coef
1	77 00 560 788	Retaining clip	2
3	77 11 128 252	Seal Ø10x14x2	4
4	77 11 162 723	Tuyau rigide MC frein AV / raccord 4 voies	1
5	77 11 156 571	Fitting 4 voies	1
6	77 11 065 266	Blanking plug M10	2
7	77 11 162 724	Tuyau rigide raccord 4 voies / passe cloison roue AVG	1
8	77 11 158 102	Grommet M10x100-Dash 3	2
9	77 11 162 725	Tuyau flexible passe cloison roue / étrier AVG et AVD	2
10	77 11 156 532	Copper washer 10x14x1	8
11	77 11 153 346	Vis banjo acier M10x100	2
12	77 11 162 726	Tuyau rigide raccord 4 voies / passe cloison roue AVD	1
13	77 11 162 727	Tuyau rigide MC frein AR / passe cloison AV	1
14	77 11 160 685	Bulkhead fitting M10x100 - M10x100	1
15	77 11 153 769	Nut HM16x100	1
16	77 11 162 728	Tuyau rigide passe cloison AV / entrée limiteur	1
17	77 11 157 222	Limiteur de frein Béringer	1
18	77 11 162 729	Tuyau rigide pour limiteur / raccord 3 voies	1
26	82 00 208 654	Fitting 3 voies AR	1
27	77 11 162 730	Tuyau rigide raccord 3 voies AR / passe cloison AR	1
28	77 11 160 661	Grommet M10x100-3/8x24	1
29	77 11 162 731	Tuyau flexible passe cloison AR / tuyau étriers frein AR	1
30	77 11 162 732	Tuyau flexible étriers AR	1
31	77 11 157 233	Mounting-Brake limiter	1
32	77 11 065 306	Vis CBHC M5-15	4
33	77 11 065 574	Ecrou Frein Simmonds M5 5PH135M	4
34	77 11 129 246	Vis CBHC M6-12	2



RENAULT SPORT

avr.-2013



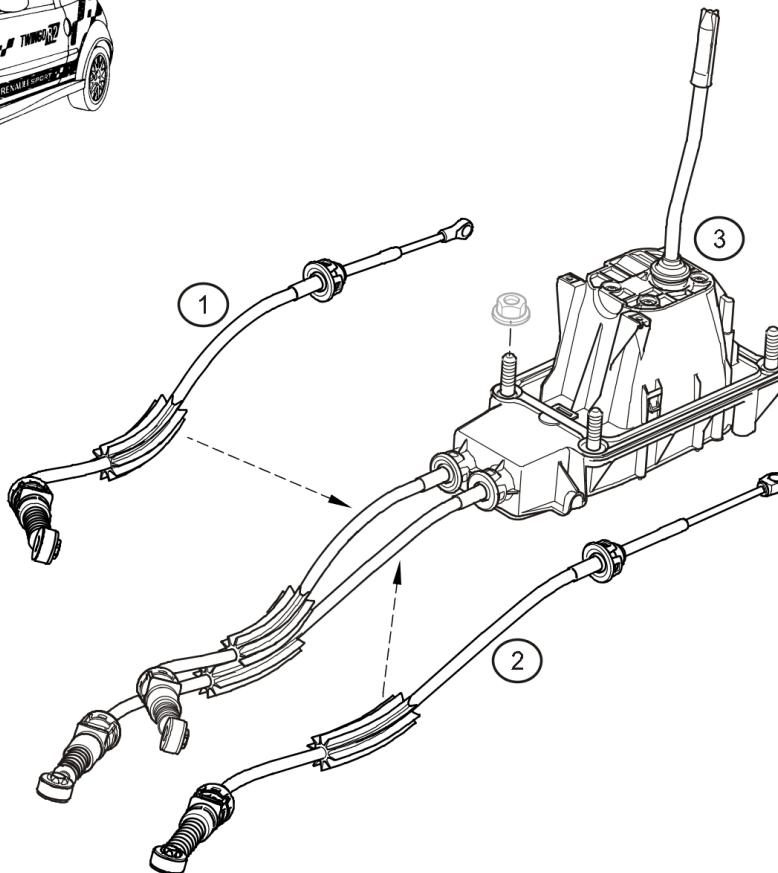
37.80



TWINGO R1



38.00



Rep.	Reference	Description	Coef
1	77 11 167 408	Cable commande de vitesses "sélection"	1
2	77 11 167 407	Cable commande de vitesses "passage"	1
3	77 11 163 923	Levier équipé origine	1

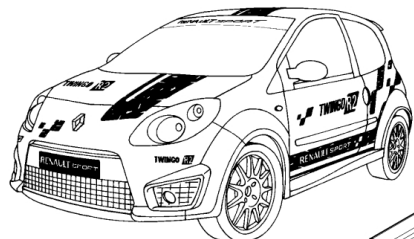


RENAULT SPORT

déc.-2011

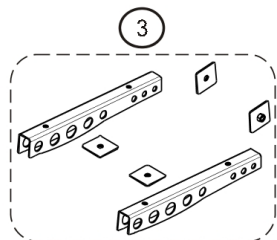


38.00

**TWINGO R1****40.00**

2

1



Rep.	Reference	Description	Coef
1	77 11 162 622	Rollcage R1	1
2	77 11 160 040	Mousse Lifeline Ø45 L=600	2
3	77 11 163 922	Collection supports à souder	1
4	77 11 167 104	Collection attache capot / hayon avec tige acier	2



RENAULT SPORT

avr.-2012



RENAULT

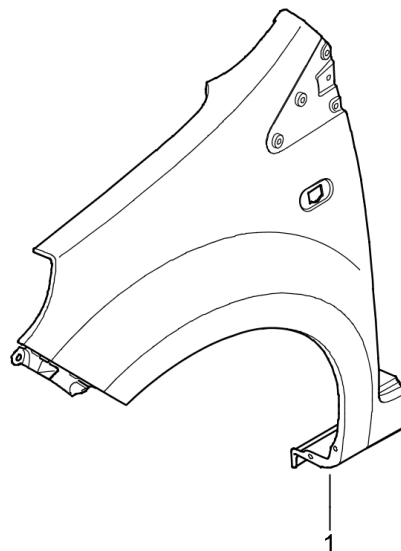
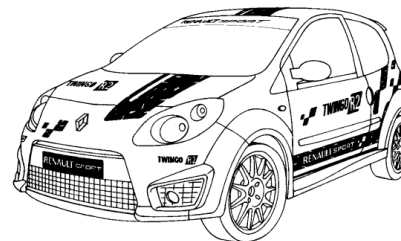
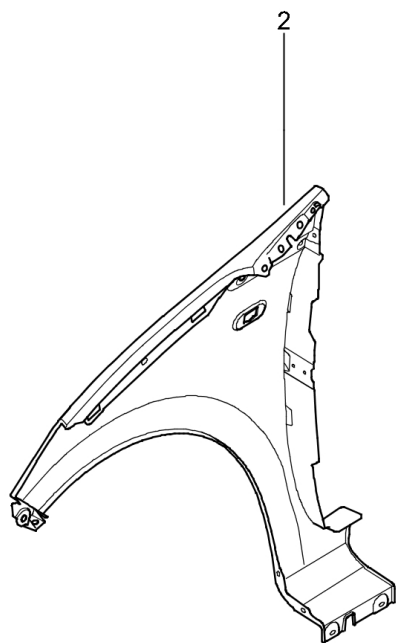
40.00



TWINGO R1



46.00



Rep.	Reference	Description	Coef
1	77 11 162 947	Front Wing-LH	1
2	77 11 162 946	Front Wing-RH	1



RENAULT SPORT

mars-2011



RENAULT

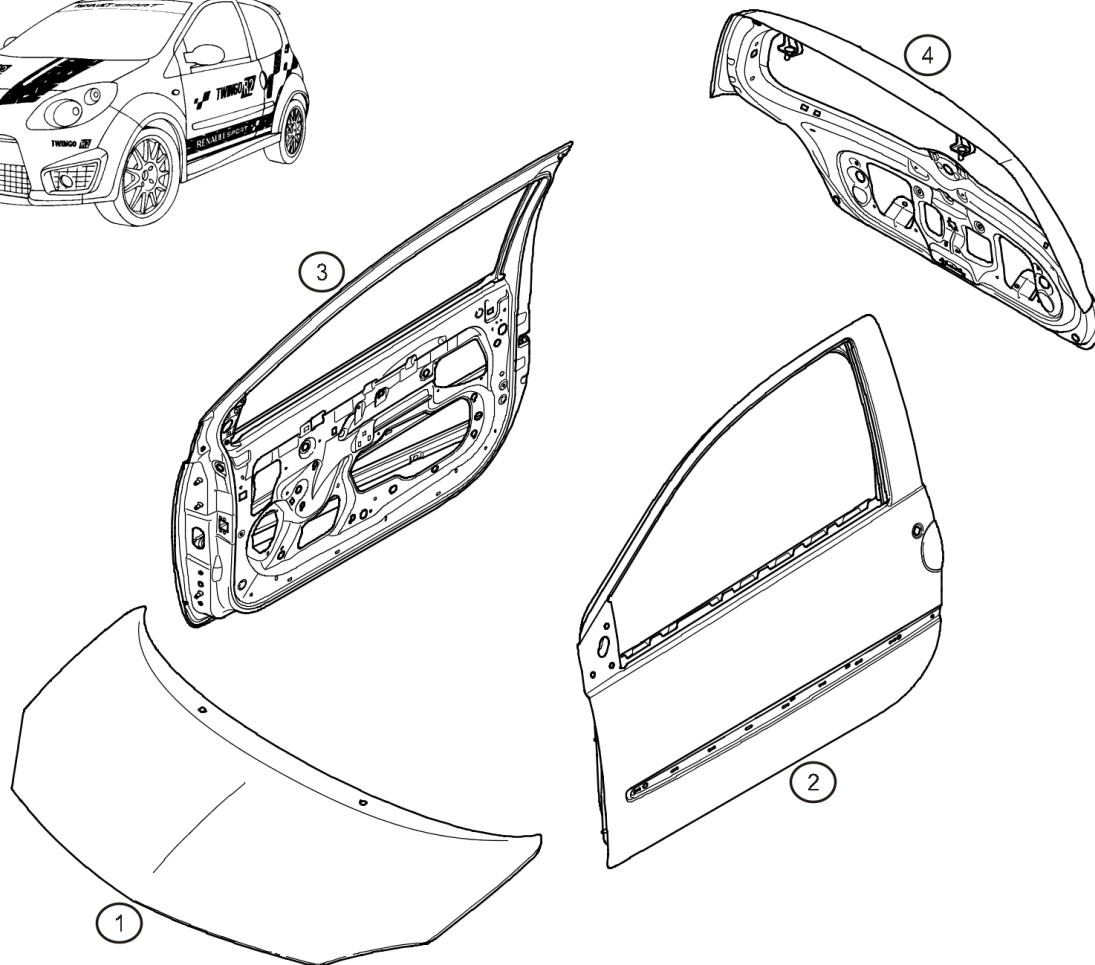
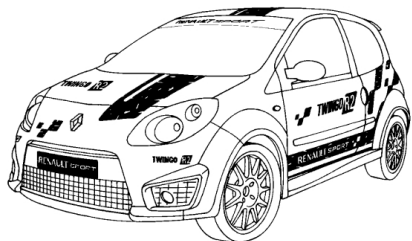
46.00



TWINGO R1



48.00



Rep.	Reference	Description	Coef
1	77 11 162 944	Bonnet	1
2	77 11 162 943	Door LH	1
3	77 11 162 942	Door RH	1
4	77 11 162 945	Tailgate	1

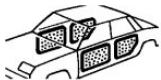


RENAULT SPORT

mars-2011



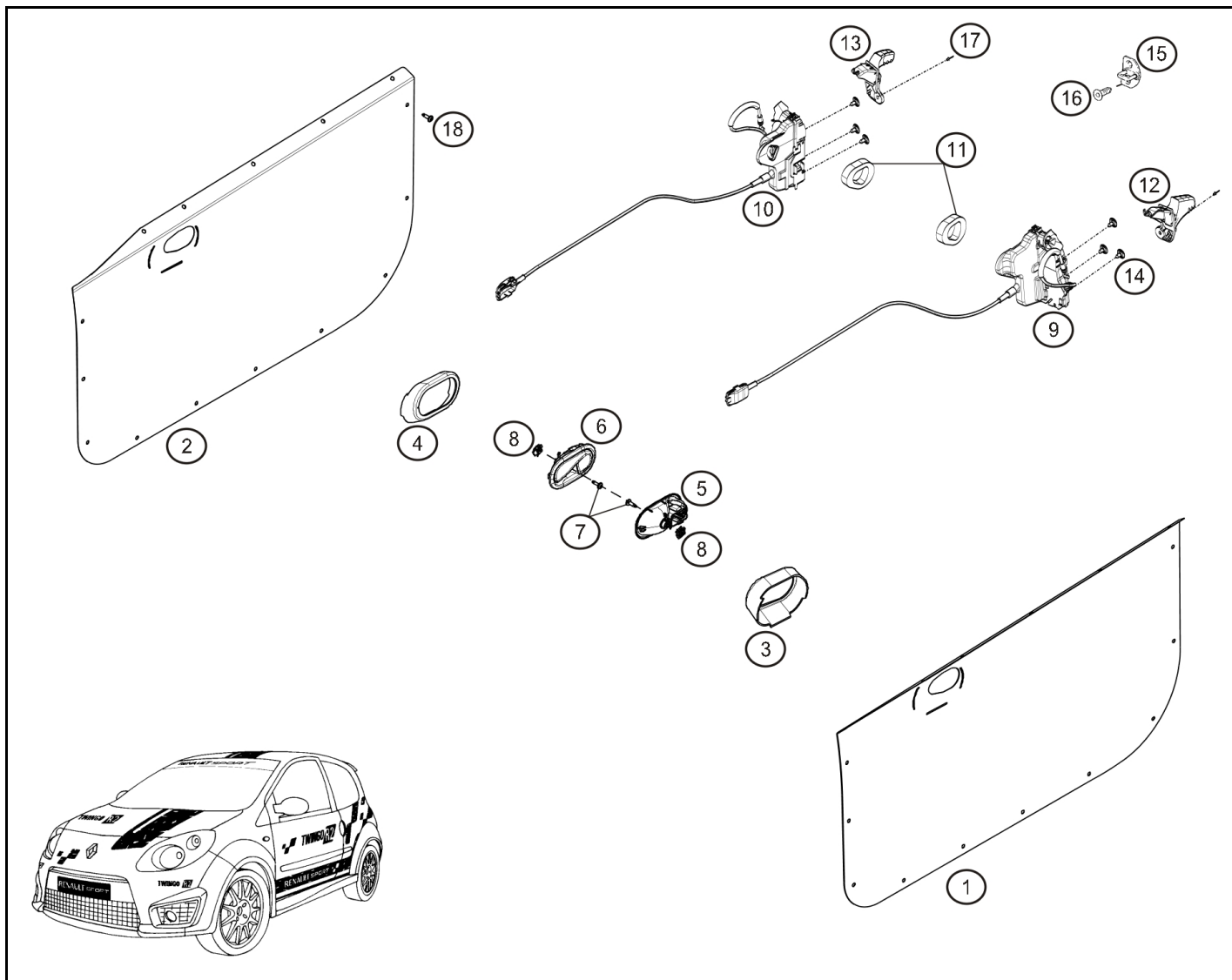
48.00



TWINGO R1



48.50



Rep.	Reference	Description	Coef
1	77 11 162 747	Panneau porte alu G	1
2	77 11 162 748	Panneau porte alu Dt	1
3	77 11 162 749	Support commande ouverture de porte G	1
4	77 11 162 750	Support commande ouverture de porte Dt	1
5	82 00 843 629	Poignée de porte intérieure D	1
6	82 00 843 631	Poignée de porte intérieure G	1
9	82 00 384 972	Serrure G	1
10	82 00 384 971	Serrure D	1
11	82 00 566 180	Mousse étanche	2
12	82 00 385 181	Poignée de porte extérieure G	1
13	82 00 385 179	Poignée de porte extérieure D	1
14	77 03 006 229	Screw CBLX M6	6
15	82 00 765 143	Door striker	2
16	77 03 004 170	Vis fixation gache de porte	4
17	77 03 072 251	Rivet Ø 4.8x12	2
18	77 03 077 244	Agrafe panneau de porte	28

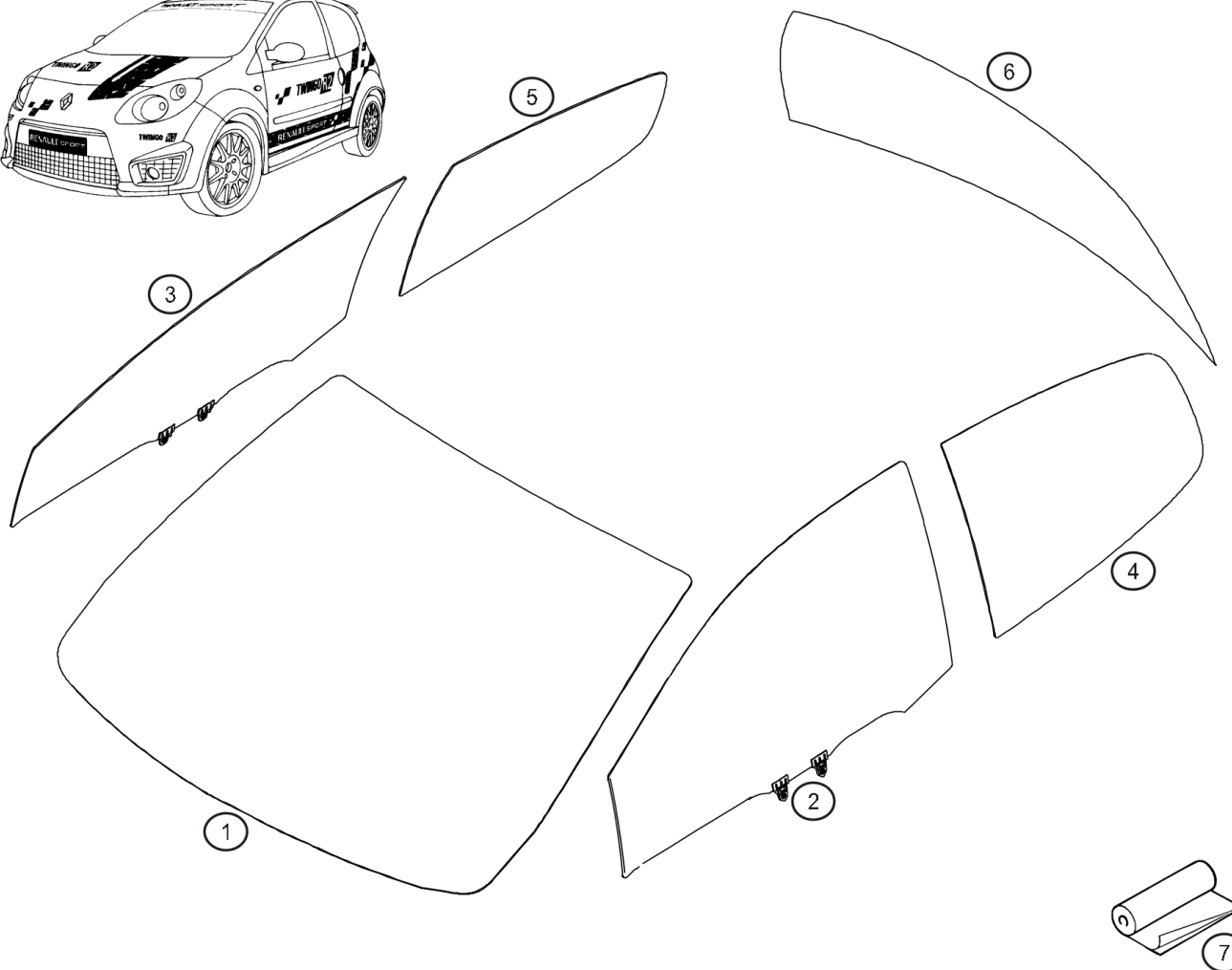
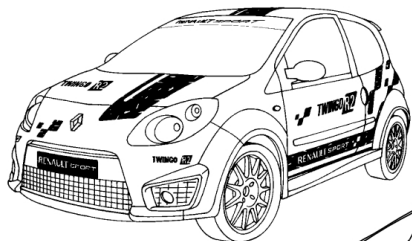


RENAULT SPORT

déc.-2013



48.50

**TWINGO R1****54.00**

Rep.	Reference	Description	Coef
1	77 11 162 798	Pare brise	1
2	77 11 162 795	Glace de porte G	1
3	77 11 162 796	Glace de porte D	1
4	77 11 162 794	Glace de custode G	1
5	77 11 162 784	Glace de custode D	1
6	77 11 162 783	Rear window	1
7	60 00 072 744	Film anti-déflagrant	1



RENAULT SPORT

mars-2011



RENAULT

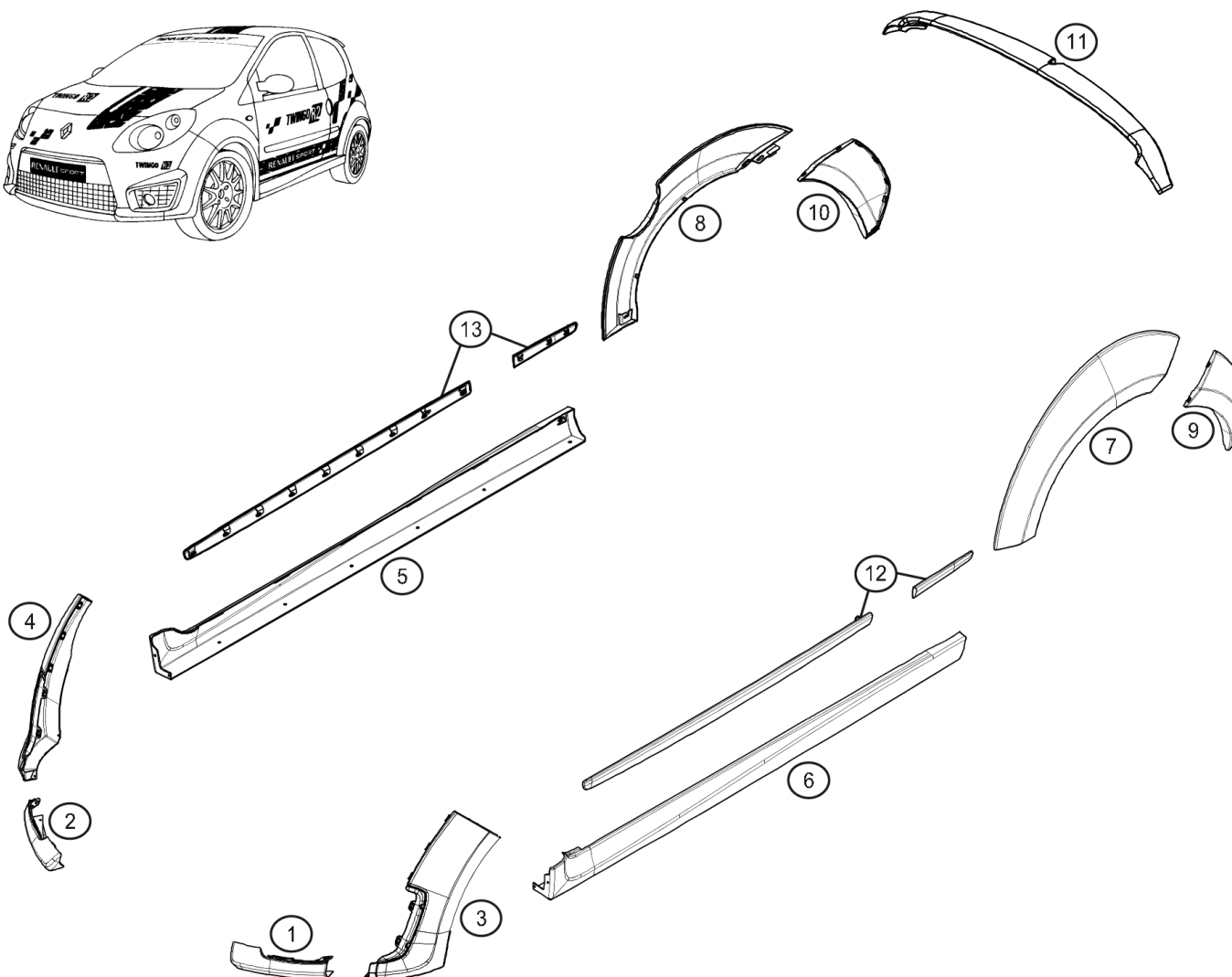
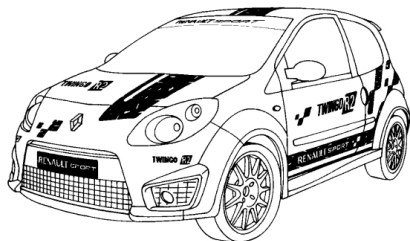
54.00



TWINGO R1

R1

55.20



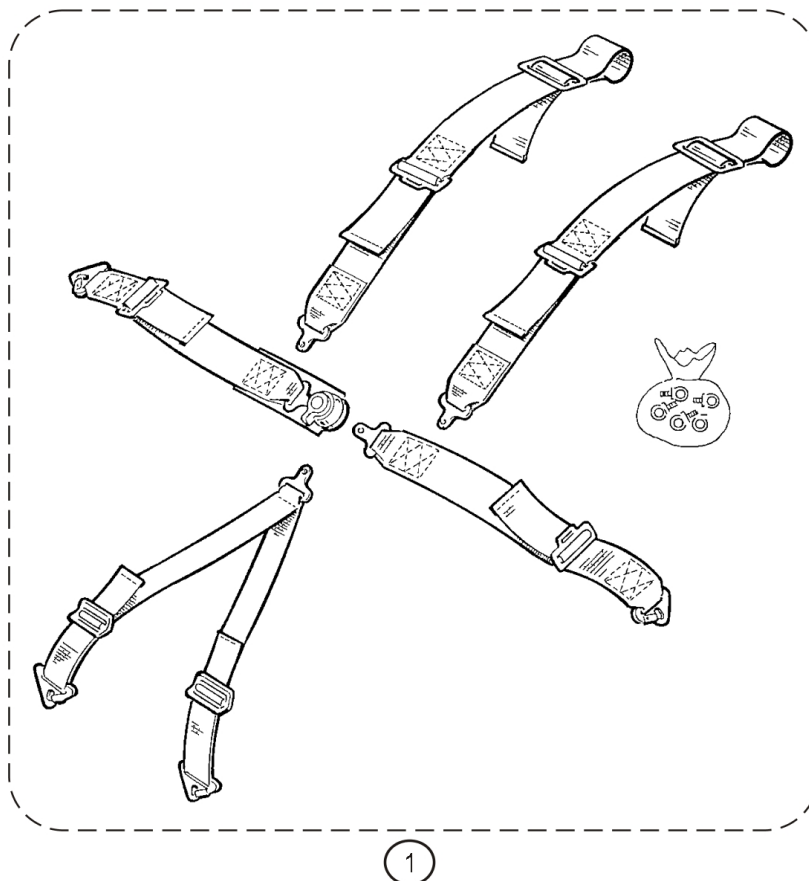
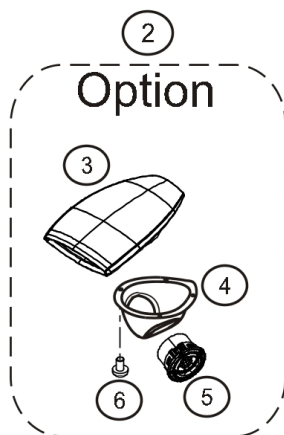
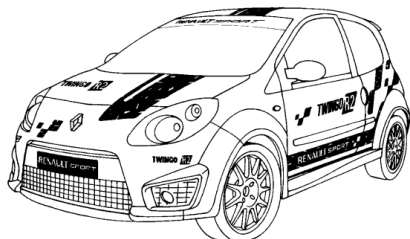
Rep.	Reference	Description	Coef
1	77 11 162 937	Enjoliveur inf. G bouclier AV	1
2	77 11 162 936	Enjoliveur inf. D bouclier AV	1
3	77 11 162 935	Enjoliveur G bouclier AV	1
4	77 11 162 934	Enjoliveur D bouclier AV	1
5	77 11 162 932	Bas de caisse D	1
6	77 11 162 933	Bas de caisse G	1
7	77 11 162 929	Enjoliveur aile ARG	1
8	77 11 162 928	Enjoliveur aile ARD	1
9	77 11 162 930	Enjoliveur G bouclier AR	1
10	77 11 162 931	Enjoliveur D bouclier AR	1
11	77 11 162 927	Rear aerofoil	1
12	82 00 696 416	Baguette latérale G	1
13	82 00 696 679	Baguette latérale D	1



janv.-2014



RENAULT SPORT

**TWINGO R1****R1****59.30**

Rep.	Reference	Description	Coef
1	77 11 167 161	Harnais Sabelt logo RS 2011	2
2	77 11 163 783	Kit trappe de toit	1
3	® 77 11 160 129	Roof vent	1
4	® 77 11 160 315	Diffuseur habitacle	1
5	77 11 160 322	Aérateur	2
6	77 03 026 012	Fixing bolt	4



RENAULT SPORT

mars-2011



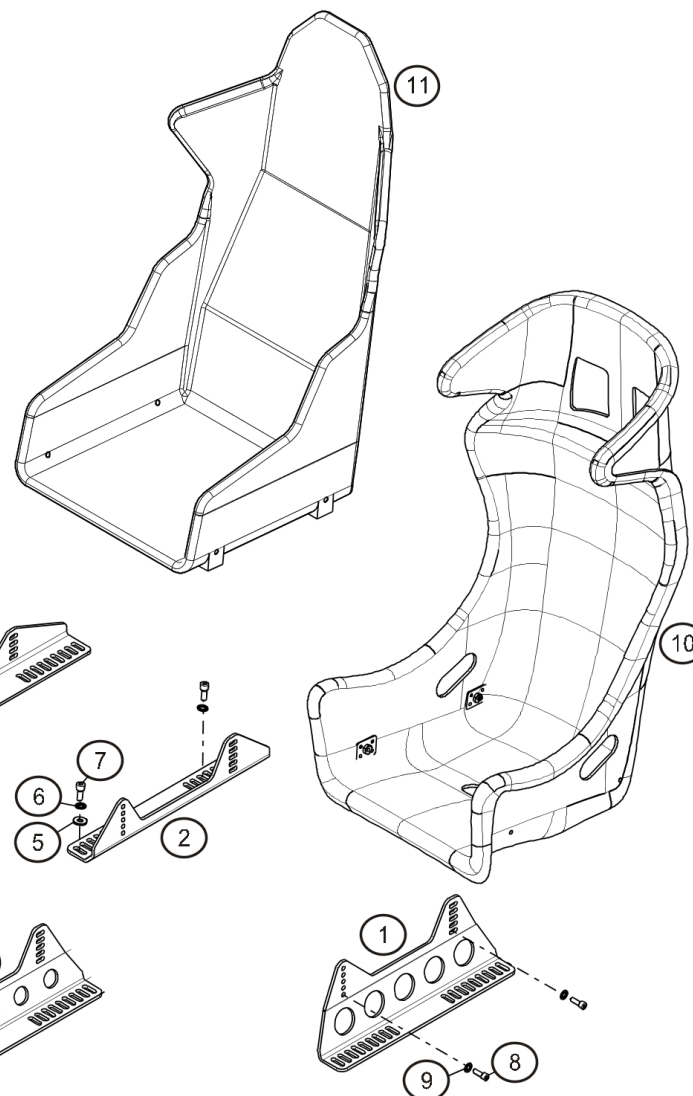
59.30



TWINGO R1



75.00



Rep.	Reference	Description	Coef
1	77 11 162 859	Support ext. baquet petit pilote	1
2	77 11 162 860	Support int. baquet petit pilote	1
3	77 11 162 856	Support Int baquet Copilote (Ep : 6mm Alu)	1
4	77 11 162 855	Support Ext baquet Copilote (Ep : 6mm Alu)	1
5	77 03 053 341	Plain washer Ø10x26x3	1
6	77 11 156 926	Washer Ø10x22	1
7	77 11 156 901	Screw CHC10-25	2
8	77 11 128 967	CHS Bolt M8-35 cl.12	1
9	77 11 156 945	Washer Ø8x18 ép:1.4	8
10	77 11 167 158	Baquet Taurus taille M	2
	77 11 167 159	Baquet Taurus logo 2011 Taille L	2
	77 11 167 160	Baquet Taurus logo 2011 Taille XL	2
11	77 11 162 766	Baquet Racer Duo noir taille L	2
12	77 11 162 857	Support ext. baquet grand pilote	1
13	77 11 162 858	Support int. baquet grand pilote	1
14	® 77 11 167 105	Fire extinguisher	1
15	77 11 160 748	Extincteur Manuel	1
16	® 77 11 162 903	Plaque de lest 1.5kg	1
18	77 11 162 919	Contre plaque fix. extincteur	1
19	77 11 162 949	Contre plaque G fix. extincteur manuel	1
20	77 11 162 948	Contre plaque D fix. extincteur manuel	1
21	77 11 159 835	Fire extinguisher command box	1



mai-2013



RENAULT SPORT

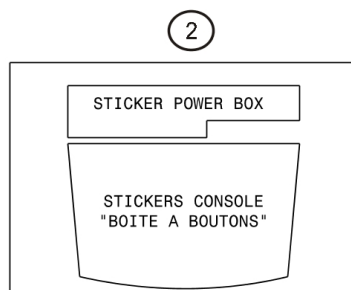
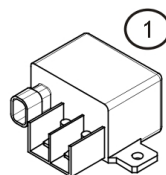
75.00



TWINGO R1

R1

80.00



Rep.	Reference	Description	Coef
1	77 11 160 136	Master Relay	1
2	77 11 162 957	Sticker "twingo R1" console centrale	1
100	77 11 162 850	Wiring loom-Master switch	1
101	77 11 162 851	Cablage lève vitre	1

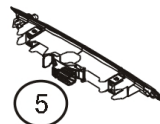
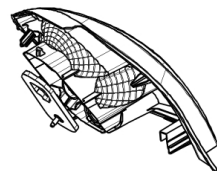
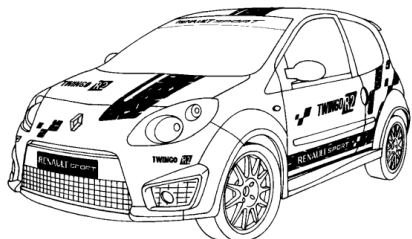
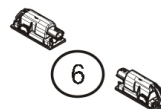
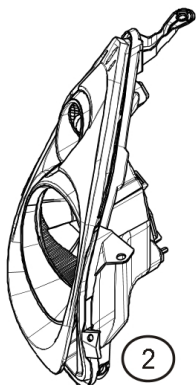
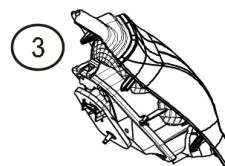
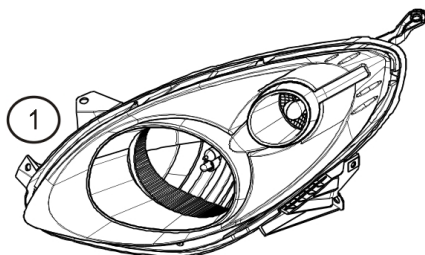


RENAULT SPORT

déc.-2011



80.00

**TWINGO R1****81.00****4****6****2****3****1****7**

Rep.	Reference	Description	Coef
1	77 11 162 799	Projecteur AVG	1
2	77 11 162 800	Projecteur AVD	1
3	77 11 162 801	Rear light-LH	1
4	77 11 162 802	Rear light-RH	1



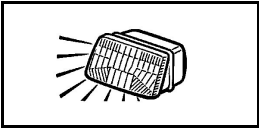
RENAULT SPORT

janv.-2014



RENAULT

81.00



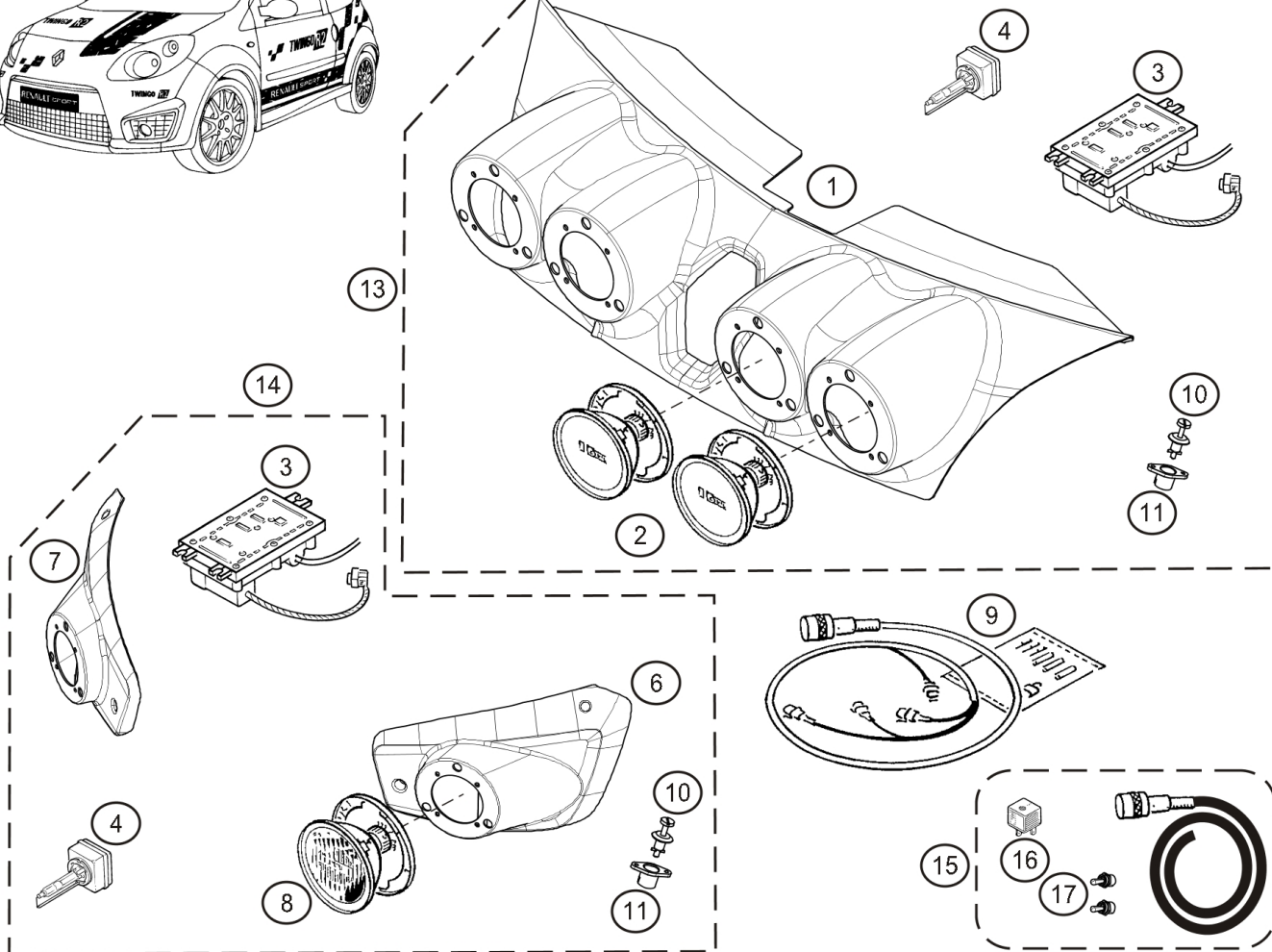
TWINGO R1



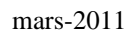
81.10



XENON



Rep.	Reference	Description	Coef
1	77 11 162 756	Rampe de phares	1
2	77 11 162 761	Phare de pointe	4
3	77 11 162 764	Ballast recablé	6
4	77 11 162 763	Bulb	6
6	77 11 162 759	Support G phare de virage	1
7	77 11 162 760	Support D phare de virage	1
8	77 11 162 762	Phare de virage	2
9	77 11 162 907	Cablage rampe de phares	1
10	77 11 162 758	Axes de fermeture Camloc	5
11	77 11 162 757	Réceptacle Camloc	5
13	77 11 163 780	Kit rampe de phares	1
14	77 11 163 784	Kit phares de virages	1
15	77 11 162 854	Cablage adaptation + interrupteurs	1
16	77 00 414 484	Relay	2
17	00 11 162 854	Interrupteur	2

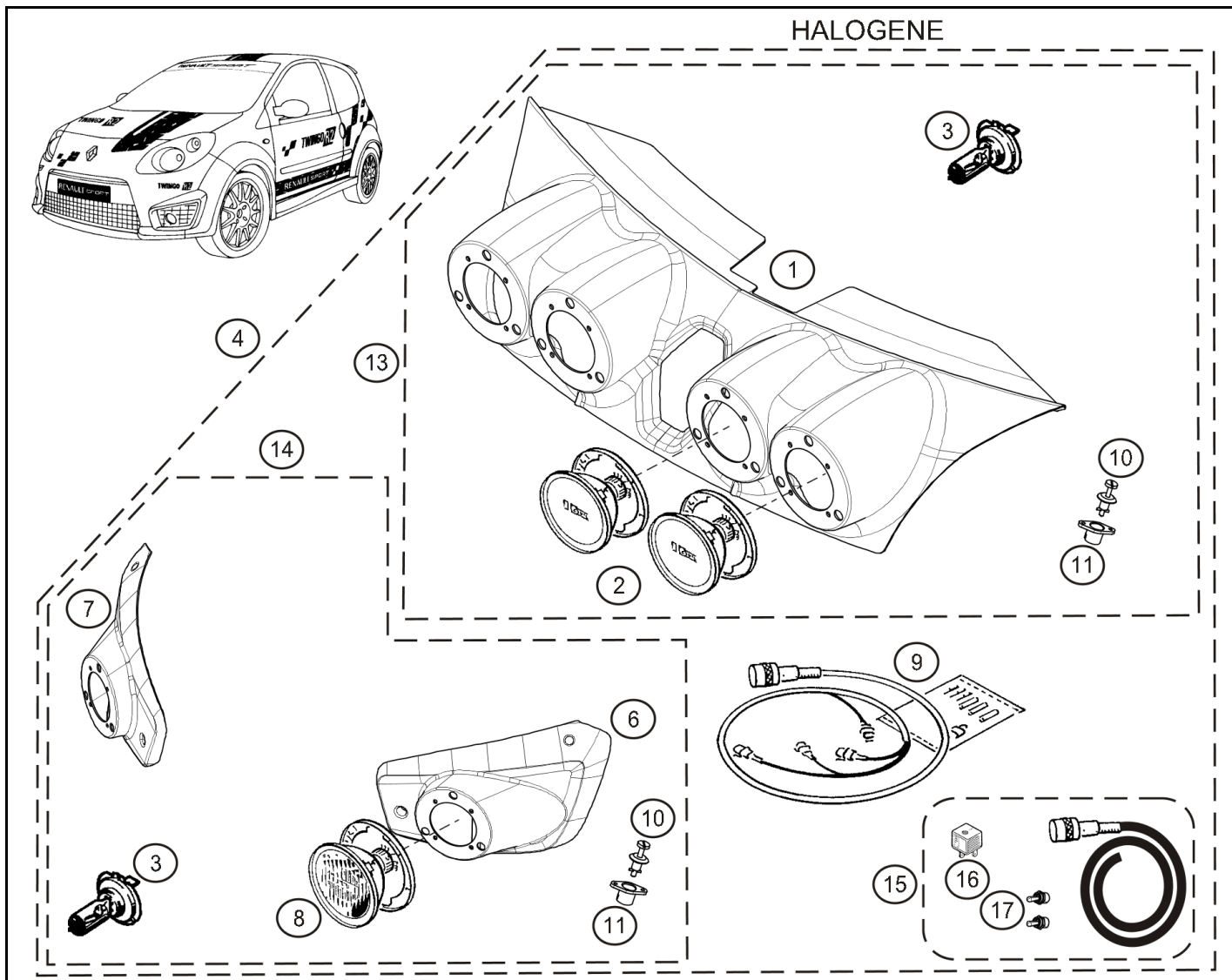




TWINGO R1



81.11



Rep.	Reference	Description	Coef
1	77 11 162 756	Rampe de phares	1
2	77 11 162 761	Phare de pointe	4
3	77 11 162 983	Lampe halogène	6
4	77 11 163 914	Kit Halogène complet	1
6	77 11 162 759	Support G phare de virage	1
7	77 11 162 760	Support D phare de virage	1
8	77 11 162 762	Phare de virage	2
9	77 11 162 907	Cablage rampe de phares	1
10	77 11 162 758	Axes de fermeture Camloc	5
11	77 11 162 757	Réceptacle Camloc	5
13	77 11 163 859	Kit rampe de phares Halogène	1
14	77 11 163 861	Kit phares de virages Halogène	1
15	77 11 162 854	Cablage adaptation + interrupteurs	1
16	77 00 414 484	Relay	2
17	00 11 162 854	Interrupteur	2



mai-2011



RENAULT SPORT

PRICES 2014

Reference	Rate	Boards	Reference	Rate	Boards	Reference	Rate	Boards	Reference	Rate	Boards
00 11 162 854	2.69	81.10	77 11 065 574	1.01	37.80	77 11 156 953	NC	32.00	77 11 162 724		29.49 37.80
		81.11	77 11 068 130	1.47	32.01	77 11 156 960	.87	37.60	77 11 162 725		32.10 37.80
41 12 000 02R		31.40	77 11 068 572	61.26	32.01	77 11 157 222	211.05	37.80	77 11 162 726		29.63 37.80
60 00 072 744	54.11	54.00	77 11 126 025	69.53	32.01	77 11 157 233	35.90	37.80	77 11 162 727		32.59 37.80
60 00 073 600	28.61	32.01	77 11 126 026	10.01	32.01	77 11 157 386	83.05	32.01	77 11 162 728		33.46 37.80
60 00 073 602	NC	33.00	77 11 126 133	4.07	32.01	77 11 158 102	11.98	37.80	77 11 162 729		32.59 37.80
77 00 111 502		11.20	77 11 126 159	26.36	32.01	77 11 158 240	111.11	12.50	77 11 162 730		30.70 37.80
77 00 414 484		81.10	77 11 126 168	48.58	32.01	77 11 158 514	97.15	12.50	77 11 162 731		45.51 37.80
		81.11	77 11 126 599	79.39	32.01	77 11 159 835	58.19	75.00	77 11 162 732		58.16 37.80
77 00 426 450		32.01	77 11 126 686	.24	31.40	77 11 160 037	136.95	36.00	77 11 162 739		202.85 19.00
77 00 431 898	NC	12.50			34.01	77 11 160 040	73.08	40.00	77 11 162 740		143.76 19.00
77 00 560 788	NC	37.80	77 11 128 118	28.67	35.00	77 11 160 129	150.62	59.30	77 11 162 747		39.46 48.50
77 00 698 709		31.40	77 11 128 167	.35	31.00	77 11 160 136	96.22	80.00	77 11 162 748		39.46 48.50
77 00 839 274		37.60			31.01	77 11 160 185	15.60	36.00	77 11 162 749		51.15 48.50
77 01 068 367		33.00	77 11 128 252	1.01	37.80	77 11 160 194	2.36	33.00	77 11 162 750		51.15 48.50
77 01 210 101		37.60	77 11 128 371	60.55	12.50	77 11 160 195	66.96	12.50	77 11 162 756		269.09 81.10
77 03 002 835		32.00	77 11 128 925	1.08	34.01	77 11 160 196	99.50	12.50			81.11
		32.01	77 11 128 967	1.03	75.00	77 11 160 198	38.19	12.50	77 11 162 757	4.10	81.10
77 03 002 917		11.20	77 11 129 246	.84	31.40	77 11 160 199	17.38	12.50			81.11
77 03 002 951	NC	34.00			37.80	77 11 160 200	2.67	12.50	77 11 162 758	5.14	81.10
77 03 004 128		31.40	77 11 129 353	39.26	34.01	77 11 160 201		12.50			81.11
77 03 004 170		48.50	77 11 129 369	36.16	33.00	77 11 160 315	62.68	59.30	77 11 162 759	86.33	81.10
77 03 006 229	NC	48.50	77 11 129 370	36.16	33.00	77 11 160 322	6.28	59.30			81.11
77 03 009 026	NC	32.00	77 11 129 371	36.16	33.00	77 11 160 368	.16	32.00	77 11 162 760	86.33	81.10
77 03 017 088		12.50	77 11 129 373	14.01	34.01	77 11 160 420	45.08	11.20			81.11
77 03 020 041		17.00	77 11 129 374	8.33	34.01	77 11 160 532	30.48	36.00	77 11 162 761	131.05	81.10
77 03 026 012		59.30	77 11 129 375	26.06	34.01	77 11 160 551	1.32	36.00			81.11
77 03 033 016	NC	37.60	77 11 129 377	36.16	33.00	77 11 160 661	14.80	37.80	77 11 162 762	131.05	81.10
77 03 033 132		37.60	77 11 129 389	7.11	34.01	77 11 160 685	25.40	37.80			81.11
77 03 034 017		37.60	77 11 129 404	9.77	32.01	77 11 160 725	10.75	12.50	77 11 162 763	147.43	81.10
77 03 034 248		31.10	77 11 129 416	34.69	34.01	77 11 160 737	5.36	12.50	77 11 162 764	243.53	81.10
		33.00	77 11 129 453	53.47	34.01	77 11 160 748	78.37	75.00	77 11 162 766	205.12	75.00
77 03 034 250		33.00	77 11 129 563	179.19	32.01	77 11 160 787	9.50	32.01	77 11 162 767	101.83	36.00
77 03 034 262		34.01	77 11 129 571	127.01	34.01	77 11 160 795	61.92	35.00	77 11 162 780	167.41	35.00
77 03 034 265		32.00	77 11 129 598	6.54	33.00	77 11 160 805	.97	12.50	77 11 162 781	NC	31.01
		32.01	77 11 153 346	2.50	37.80	77 11 160 952	2.94	31.10	77 11 162 783	84.27	54.00
77 03 034 274		31.10	77 11 153 769	6.07	37.80	77 11 160 962	62.06	12.50	77 11 162 784	19.94	54.00
77 03 053 341		75.00	77 11 155 392	65.53	17.00	77 11 160 977	43.43	37.60	77 11 162 794	21.18	54.00
77 03 072 251		48.50	77 11 155 393	11.58	17.00	77 11 162 085	50.72	31.00	77 11 162 795	46.40	54.00
77 03 077 244		48.50	77 11 156 046	20.11	32.01			31.01	77 11 162 796	46.40	54.00
77 03 602 187		31.00	77 11 156 508	.60	12.50	77 11 162 616	7.51	33.00	77 11 162 798	105.76	54.00
		31.01	77 11 156 532	.42	37.80	77 11 162 622	2717.39	40.00	77 11 162 799	90.55	81.00
77 03 602 211		31.00	77 11 156 571	82.18	37.80	77 11 162 640	6.70	33.00	77 11 162 800	90.55	81.00
		31.01	77 11 156 617	8.71	31.00	77 11 162 660	98.55	20.00	77 11 162 801	51.84	81.00
77 03 602 221		31.00			31.01	77 11 162 677	6.00	33.00	77 11 162 802	47.44	81.00
		31.01	77 11 156 901	1.03	75.00	77 11 162 681	210.71	32.01	77 11 162 804	153.54	31.40
77 03 602 272		11.20	77 11 156 926	.19	75.00	77 11 162 706	146.39	12.50	77 11 162 805	161.62	31.40
77 05 008 033		35.00	77 11 156 931	.23	31.10	77 11 162 707	12.66	12.50	77 11 162 810	64.32	33.00
77 11 051 326	1.38	32.00			33.00	77 11 162 711	85.81	33.00	77 11 162 811	104.10	33.00
77 11 065 249	4.74	32.00	77 11 156 945	.06	31.00	77 11 162 712	85.81	33.00	77 11 162 812	104.10	33.00
77 11 065 266	15.20	37.80			31.01	77 11 162 722	191.63	37.60	77 11 162 813	67.13	31.40
77 11 065 306	1.41	37.80			75.00	77 11 162 723	29.63	37.80	77 11 162 814	107.84	31.40

PRICES 2014

Reference	Rate	Boards	Reference	Rate	Boards	Reference	Rate	Boards	Reference	Rate	Boards
77 11 162 815	107.84	31.40	77 11 162 936	15.35	55.20	77 11 167 648		9.87	19.80		
77 11 162 816	65.47	31.40	77 11 162 937	15.35	55.20	77 11 167 658		7.51	31.40		
77 11 162 817	98.20	31.40	77 11 162 942	199.25	48.00	79 03 062 105		2.16	12.50		
77 11 162 825	120.29	31.10	77 11 162 943	199.25	48.00	82 00 029 741			11.20		
77 11 162 826	120.29	31.10	77 11 162 944	150.12	48.00	82 00 038 303		6.80	33.00		
77 11 162 827	7.29	17.00	77 11 162 945	205.15	48.00	82 00 186 510			36.00		
77 11 162 845	66.18	11.20	77 11 162 946	95.37	46.00	82 00 205 044			37.60		
77 11 162 848	67.77	12.50	77 11 162 947	95.37	46.00	82 00 208 654			37.80		
77 11 162 850	247.41	80.00	77 11 162 948	7.70	75.00	82 00 212 521		NC	31.40		
77 11 162 851	68.43	80.00	77 11 162 949	6.95	75.00	82 00 384 971			48.50		
77 11 162 852	139.56	19.50	77 11 162 957	14.59	80.00	82 00 384 972			48.50		
77 11 162 854	205.52	81.10	77 11 162 963	1036.29	11.20	82 00 385 179			48.50		
		81.11	77 11 162 969	304.12	17.00	82 00 385 181			48.50		
77 11 162 855	70.88	75.00	77 11 162 983	41.07	81.11	82 00 403 300			37.60		
77 11 162 856	61.37	75.00	77 11 163 780		81.10	82 00 420 641			37.60		
77 11 162 857	71.21	75.00	77 11 163 783		59.30	82 00 492 426			17.00		
77 11 162 858	57.76	75.00	77 11 163 784		81.10	82 00 504 652			19.50		
77 11 162 859	70.90	75.00	77 11 163 859	940.66	81.11	82 00 566 180			48.50		
77 11 162 860	55.21	75.00	77 11 163 861	537.69	81.11	82 00 568 671			17.00		
77 11 162 881	5.68	31.40	77 11 163 914	NC	81.11	82 00 649 356			33.00		
77 11 162 882	5.68	31.40	77 11 163 922	935.43	40.00	82 00 650 085			17.00		
77 11 162 889	40.89	36.00	77 11 163 923		38.00	82 00 650 172			32.01		
77 11 162 891	17.47	17.00	77 11 163 972	205.15	21.00	82 00 666 449			32.01		
77 11 162 892	234.93	21.00	77 11 163 974	206.45	19.00	82 00 675 990			33.00		
77 11 162 895		32.00	77 11 167 103	226.47	33.00	82 00 675 998			37.60		
77 11 162 900		17.00	77 11 167 104	23.41	40.00	82 00 680 689			17.00		
77 11 162 901	143.70	12.50	77 11 167 105	506.75	75.00	82 00 692 139			37.60		
77 11 162 903	11.43	75.00	77 11 167 158	440.88	75.00	82 00 696 416		101.80	55.20		
77 11 162 904		12.50	77 11 167 159	453.95	75.00	82 00 696 679		101.80	55.20		
77 11 162 907	145.85	81.10	77 11 167 160	498.68	75.00	82 00 765 143			48.50		
		81.11	77 11 167 161	181.00	59.30	82 00 821 813			16.00		
77 11 162 911	NC	10.00	77 11 167 200	2517.61	21.00	82 00 843 629			48.50		
77 11 162 913	127.93	31.40	77 11 167 201	98.49	34.00	82 00 843 631			48.50		
77 11 162 914	127.93	31.40	77 11 167 202	137.64	34.00	82 00 940 054			17.00		
77 11 162 915	212.52	16.00	77 11 167 203	137.64	32.00	82 01 425 199		16.94	32.01		
77 11 162 919	6.09	75.00	77 11 167 254	2.67	31.40	82 01 437 601		483.75	31.00		
77 11 162 920	359.17	16.00			33.00				31.01		
77 11 162 921	69.86	31.00			35.00						
		31.01	77 11 167 335	259.80	29.00						
77 11 162 922	491.21	33.00	77 11 167 336	259.80	29.00						
77 11 162 923	157.34	33.00	77 11 167 340	28.26	19.80						
77 11 162 924	157.34	33.00	77 11 167 342	63.66	19.80						
77 11 162 925	75.09	20.00	77 11 167 343	125.00	19.80						
77 11 162 927	179.67	55.20	77 11 167 399	9.79	34.00						
77 11 162 928	47.30	55.20	77 11 167 407	163.54	38.00						
77 11 162 929	47.30	55.20	77 11 167 408	163.54	38.00						
77 11 162 930	24.93	55.20	77 11 167 413	738.61	32.00						
77 11 162 931	24.93	55.20	77 11 167 414	738.61	32.00						
77 11 162 932	32.42	55.20	77 11 167 488	419.13	31.00						
77 11 162 933	32.42	55.20	77 11 167 568	59.58	19.80						
77 11 162 934	21.73	55.20	77 11 167 569	10.45	19.80						
77 11 162 935	21.73	55.20	77 11 167 570	139.56	19.50						