



CATALOGUE SECTION FOR:

GARRETT Type Turbos

T2 / T25 Range

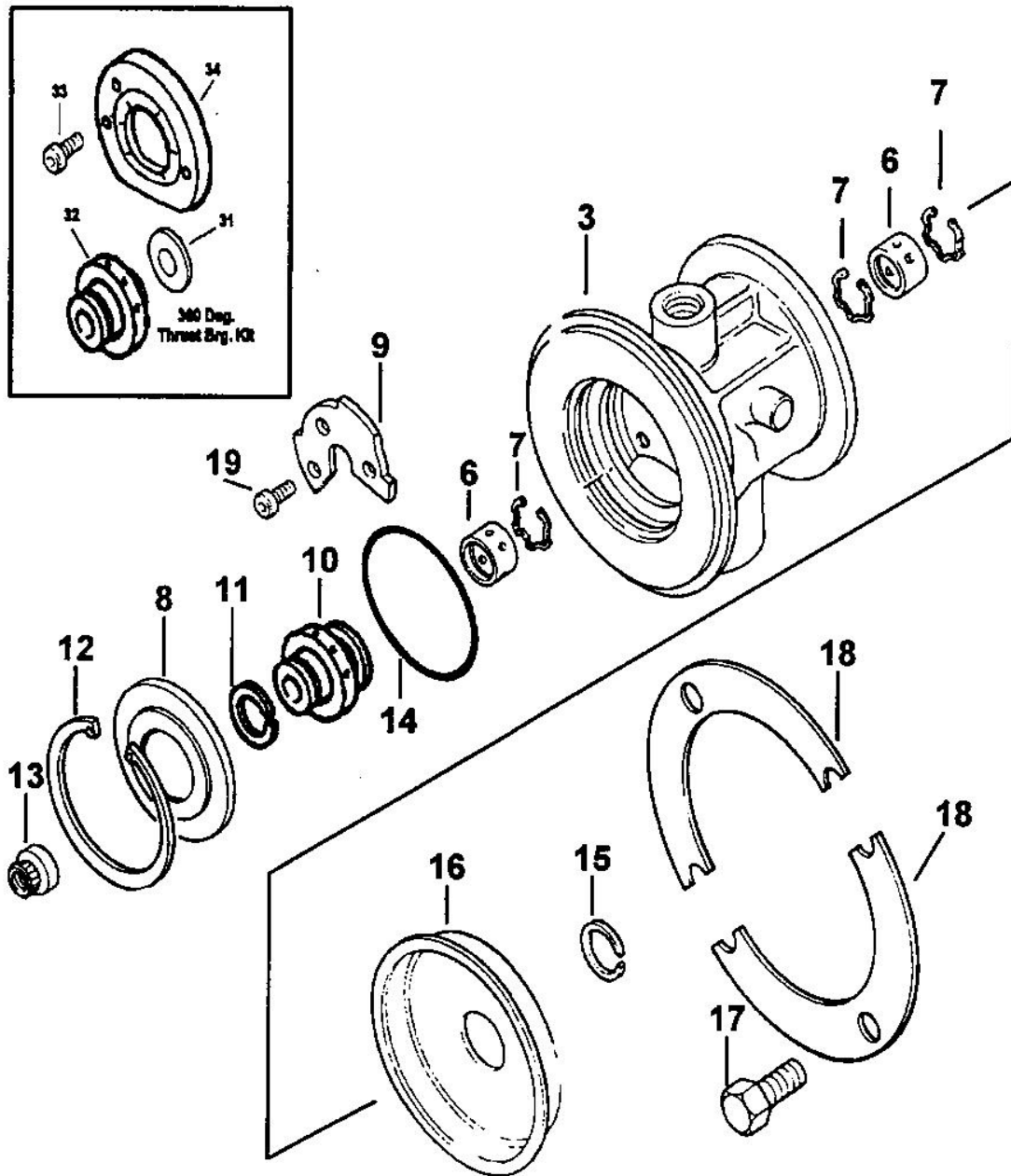
**Component Parts Common
Component Parts Not Common**



(GARRETT Type) T2/T25 Dynamic Piston Ring Seal

Models

Component Parts Common and Kit contents



MELETT 2002. ALL MANUFACTURERS NAMES, NUMBERS, SYMBOLS AND DESCRIPTIONS USED HERE IN ARE FOR REFERENCE PURPOSES ONLY AND DO NOT IMPLY THAT ANY PART LISTED IS THE PRODUCT OF THESE MANUFACTURERS.



(GARRETT Type) T2/T25 Dynamic Piston Ring Seal

Component Parts Common and Kit contents

Key	Part Description	MELETT Part Number	Quantity Per Turbo	Repair Kit (T2) 1100020750	Repair Kit (T25) 1100025753	Repair Kit (T2/25) 1100025751
3	Bearing Hsg Assembly	N/A	1			
6	Bearing (Short) Std. (.302" - 7.67mm)	1100020100	2	2		
6	Bearing (Short) OD +.005"/ ID-.005"	1100020110				
6	Bearing (Short) OD +.005"/ ID Std	1100020114				
6	Bearing (Short) OD +.010"/ ID-.010"	1100020120				
6	Bearing (Short) OD +.010"/ ID Std"	1100020124				
6	Bearing (Short) OD +.010"/ ID-.005"	1100020131				
6	Bearing (Long) Std (.369" - 9.37mm)	1100025100	2		2	
6	Bearing (Long) OD +.005"/ ID-.005"	1100025110				
6	Bearing (Long) OD +.005"/ ID Std	1100025114				
6	Bearing (Long) OD Std / ID-.005"	1100025117				
6	Bearing (Long) OD +.010"/ ID-.010"	1100025120				
6	Bearing (Long) OD +.010"/ ID Std	1100025124				
7	Snap Ring	1100025140	3	3	3	
8	Seal Plate Assembly	N/A	1			
9	Thrust Bearing (Old) 2 hole retainer	N/A	1			
9	Thrust Bearing (Later) 3 hole retainer	1100025320	1	1	1	
10	Thrust Collar (Early type)	1100025200	1			
10	Thrust Collar (Later type)	1100025201	1			
11	Piston Ring (Comp)	1100025170	1	1	1	
12	Snap Ring	1100025140	1			
13	Shaftnut	1100025350	1			
14	"O" Ring (Seal plate / Brg. Hsg)	1100025150	1			
15	Piston Ring (Turb)	1100025160	1	1	1	
15	Piston Ring (Turb) +0.010" OD	1100025180	1			
15	Piston Ring (Turb) +0.010" width	1100025181				
15	Piston Ring (Performance, offset gap)	1100025162	1			
16	Heat Shroud, Stamped	N/A	1			
17	Bolts (Brg Hsg to turb Hsg)	1100025600	4			
18	Clamp Plates	N/A	2			
19	Screw (T/bearing) Micro encapsulated	1100025620	3			
31	Thrust Washer 360deg (Notes 1, 2 & 3)		1			1
32	Thrust Collar 360deg (Notes 1, 2 & 3)		1			1
33	Screw 360deg (Notes 1, 2 & 3)		3			3
34	Thrust Brg 360deg (Notes 1, 2 & 3)		1			1

NOTES

- 1) Only supplied as a complete unit
- 2) 360deg Thrust Bearing kit can replace existing Thrust bearing and Thrust Collar
- 3) 360deg Thrust Bearing can be secured by drilling and tapping the Bearing Housing.
CARE should be taken when drilling the water cooled Bearing Housing to ensure the water cavity is not broken into.

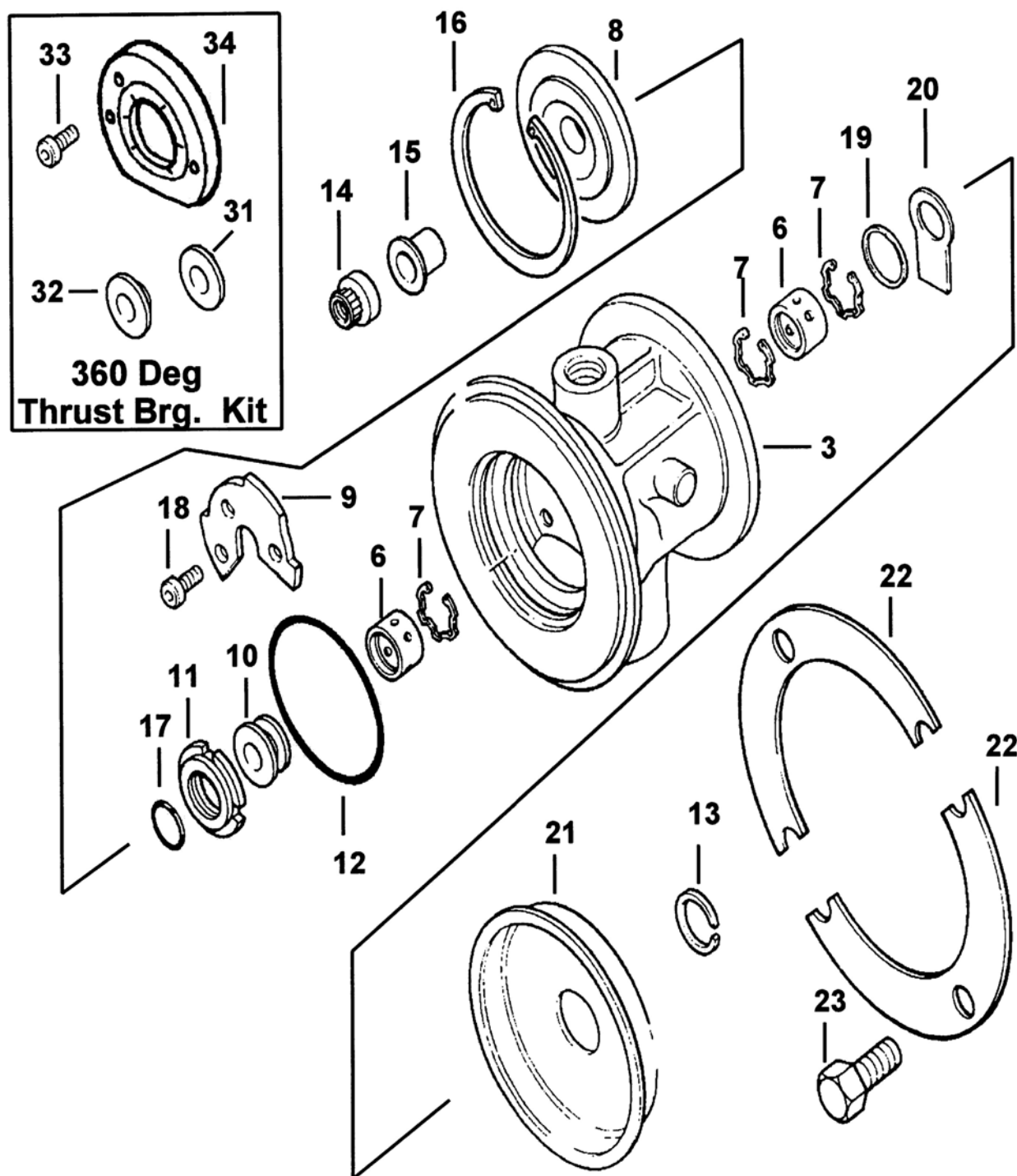
MELETT 2002. ALL MANUFACTURERS NAMES, NUMBERS, SYMBOLS AND DESCRIPTIONS USED HERE IN ARE FOR REFERENCE PURPOSES ONLY AND DO NOT IMPLY THAT ANY PART LISTED IS THE PRODUCT OF THESE MANUFACTURERS.



(GARRETT Type) T2/T25 Carbon Seal (Comp End)

Models

Component Parts Common and Kit contents



MELETT 2002. ALL MANUFACTURERS NAMES, NUMBERS, SYMBOLS AND DESCRIPTIONS USED HERE IN ARE FOR REFERENCE PURPOSES ONLY AND DO NOT IMPLY THAT ANY PART LISTED IS THE PRODUCT OF THESE MANUFACTURERS.



(GARRETT Type) T2/T25 Carbon Seal (Comp end)

Component Parts Common and Kit contents

Key	Part Description	MELETT Part Number	Quantity Per Turbo	Repair Kit (T2) 1100020754	Repair Kit (T25) 1100025754	Repair Kit (360°) 1100025752
3	Bearing Hsg Assembly	N/A	1			
6	Bearing (Short) Std. (.302" - 7.67mm)	1100020100	2	2		
6	Bearing (Short) OD +.005"/ ID-.005"	1100020110				
6	Bearing (Short) OD +.005"/ ID Std	1100020114				
6	Bearing (Short) OD +.010"/ ID-.010"	1100020120				
6	Bearing (Short) OD +.010"/ ID Std	1100020124				
6	Bearing (Short) OD +.010"/ ID-.005"	1100020131				
6	Bearing (Long) Std (.369" - 9.37mm)	1100025100	2		2	
6	Bearing (Long) OD +.005"/ ID-.005"	1100025110				
6	Bearing (Long) OD +.005"/ ID Std	1100025114				
6	Bearing (Long) OD Std / ID-.005"	1100025117				
6	Bearing (Long) OD +.010"/ ID-.010"	1100025120				
6	Bearing (Long) OD +.010"/ ID Std	1100025124				
7	Snap Ring	1100025140	3	3	3	
8	Seal Plate Assembly	N/A	1			
9	Thrust Bearing (Older type) 2 hole retainer	N/A	1			
9	Thrust Bearing (Later type) 3 hole retainer	1100025320	1	1	1	
10	Thrust Collar	1100020200	1			
11	Carbon Seal Assembly	1100025270	1	1	1	
12	"O" Ring, Seal Plate	1100025150	1			
13	Piston Ring (Turb)	1100025160	1	1	1	
15	Piston Ring (Turb) +0.010"OD	1100025180	1			
15	Piston Ring (Performance, offset gap)	1100025162	1			
14	Shaftnut	1100025350	1			
15	Spacer	N/A	1			
16	Snap Ring	1100025140	1			
17	"O" Ring	N/A	1			
18	Screw (T/bearing) Micro encapsulated	1100025620	3			
19	Locating Ring	N/A	1			
20	Oil Deflector	N/A	1			
21	Heat Shroud, Stamped	N/A	1			
22	Clamp Plates	N/A	2			
23	Bolts		4			
31	Thrust Washer 360deg (Notes 1, 2 & 3)		1			1
32	Thrust Collar 360deg (Notes 1, 2 & 3)		1			1
33	Screw 360deg (Notes 1, 2 & 3)		3			3
34	Thrust Brg 360deg (Notes 1, 2 & 3)		1			1

NOTES

- Only supplied as a complete unit
- 360deg Thrust Bearing kit can replace existing Thrust bearing and Thrust Collar
- 360deg Thrust Bearing can be secured by drilling and tapping the Bearing Housing.
CARE should be taken when drilling the water cooled Bearing Housing to ensure the water cavity is not broken into.

MELETT 2002. ALL MANUFACTURERS NAMES, NUMBERS, SYMBOLS AND DESCRIPTIONS USED HERE IN ARE FOR REFERENCE PURPOSES ONLY AND DO NOT IMPLY THAT ANY PART LISTED IS THE PRODUCT OF THESE MANUFACTURERS.



(GARRETT Type) T2/T25 Upgrade Kits

Component Parts Common and Kit contents

Key	Part Description	MELETT Part Number	Quantity Per Turbo	Upgrade Kit (T2 Dynamic) 1100020755	Upgrade Kit (T25 Dynamic) 1100025755	Upgrade Kit (T2 Carbon) 1100020756	Upgrade Kit (T25 Carbon) 1100025756
3	Bearing Hsg Assembly	N/A	1				
6	Bearing (Short) Std. (.302" - 7.67mm)	1100020100	2	2		2	
6	Bearing (Short) OD +.005"/ ID-.005"	1100020110					
6	Bearing (Short) OD +.005"/ ID Std	1100020114					
6	Bearing (Short) OD +.010"/ ID-.010"	1100020120					
6	Bearing (Short) OD +.010"/ ID Std"	1100020124					
6	Bearing (Short) OD +.010"/ ID-.005"	1100020131					
6	Bearing (Long) Std (.369" - 9.37mm)	1100025100	2		2		2
6	Bearing (Long) OD +.005"/ ID-.005"	1100025110					
6	Bearing (Long) OD +.005"/ ID Std	1100025114					
6	Bearing (Long) OD Std / ID-.005"	1100025117					
6	Bearing (Long) OD +.010"/ ID-.010"	1100025120					
6	Bearing (Long) OD +.010"/ ID Std	1100025124					
7	Snap Ring	1100025140	3	3	3	3	3
8	Seal Plate Assembly	N/A	1				
9	Thrust Bearing (Older type) 2 hole retainer	N/A	1				
9	Thrust Bearing (Later type) 3 hole retainer	1100025320	1				
10	Thrust Collar (Early type)	1100025200	1				
10	Thrust Collar (Later type)	1100025201	1				
11	Piston Ring (Comp)	1100025170	1	1	1		
11	Carbon Seal Assembly					1	1
12	Snap Ring	1100025140	1				
13	Shaftnut	1100025350	1				
14	"O" Ring (Seal plate / Brg. Hsg)	1100025150	1				
15	Piston Ring (Turb)	1100025160	1				
15	Piston Ring (Turb) +0.010" OD	1100025180	1				
15	Piston Ring (Turb) +0.010" width	1100025181					
15	Piston Ring (Performance, offset gap)	1100025162	1	1	1	1	1
16	Heat Shroud, Stamped	N/A	1				
17	Bolts (Brg Hsg to turb Hsg)	1100025600	4				
18	Clamp Plates	N/A	2				
19	Screw (T/bearing) Micro encapsulated	1100025620	3				
31	Thrust Washer 360deg (Notes 1, 2 & 3)		1	1	1	1	1
32	Thrust Collar 360deg (Notes 1, 2 & 3)		1	1	1	1	1
33	Screw 360deg (Notes 1, 2 & 3)		3	3	3	3	3
34	Thrust Brg 360deg (Notes 1, 2 & 3)		1	1	1	1	1

NOTES

- 1) Only supplied as a complete unit
- 2) 360deg Thrust Bearing kit can replace existing Thrust bearing and Thrust Collar
- 3) 360deg Thrust Bearing can be secured by drilling and tapping the Bearing Housing.
CARE should be taken when drilling the water cooled Bearing Housing to ensure the water cavity is not broken into.

MELETT 2002. ALL MANUFACTURERS NAMES, NUMBERS, SYMBOLS AND DESCRIPTIONS USED HERE IN ARE FOR REFERENCE PURPOSES ONLY AND DO NOT IMPLY THAT ANY PART LISTED IS THE PRODUCT OF THESE MANUFACTURERS.



(GARRETT Type) T2/T25 Turbine Housings

Applications	Turbo	Melett Part Number	OEM Part Number	A/R Ratio
Nissan ZX Cherry	TB0208	1100020820	430609-0040	0.47
Renault 9 & 11 1.4L W/C	TB0208	1100020822	430609-0094 430609-0036	0.35
Nissan Bluebird / Sylvia	TB0210	1100020823	430609-0056	0.63
Renault 21	T2	1100020824	430609-0059	0.47
Nissan 200 SX	T2	1100020825	430609-0113	0.64
Rover Montego	TB0223	1100020827	430609-0055	0.35
Peugeot-Citroen 806 Evasion 605M306ZX - Diesel	TB02	1100020828	430609-0174	0.41
Renault 5 GT Turbo A/C	TB0203	1100020891	430609-0030	0.35
Nissan Patrol 2.8L	TB25	1100025820	430609-0132 430609-0099	0.48
Peugeot-Citroen 806 Evasion 605XM306ZX - Petrol	TB25	1100025821	435493-0002 435493-0003	0.64

MELETT 2002. ALL MANUFACTURERS NAMES, NUMBERS, SYMBOLS AND DESCRIPTIONS USED HERE IN ARE FOR REFERENCE PURPOSES ONLY AND DO NOT IMPLY THAT ANY PART LISTED IS THE PRODUCT OF THESE MANUFACTURERS.