

RS Monitor Install for CLIO RS MK4 PH1/PH2 & Clio GT Line - A guide by @jordan_was_here (Instagram)

Thank you to **Ellison Tipton** for resolving the issue on address line 00000B40

Thank you to **James Lloyd** for resolving the issues on address line 00000B70 and 00000BF0

This is a guide for the R-Link 1 on MK4 Clio RS 200EDC, 220 Trophy (Ph1 and Ph2) and Clio GT Line

4 items needed to do this, a **T10** and **T20** screwdriver, and these 2 items:

WINGONEER® SOIC8 SOP8 Test Clip For EEPROM 93CXX/25CXX/24CXX in-circuit programming+2 adapters ↓

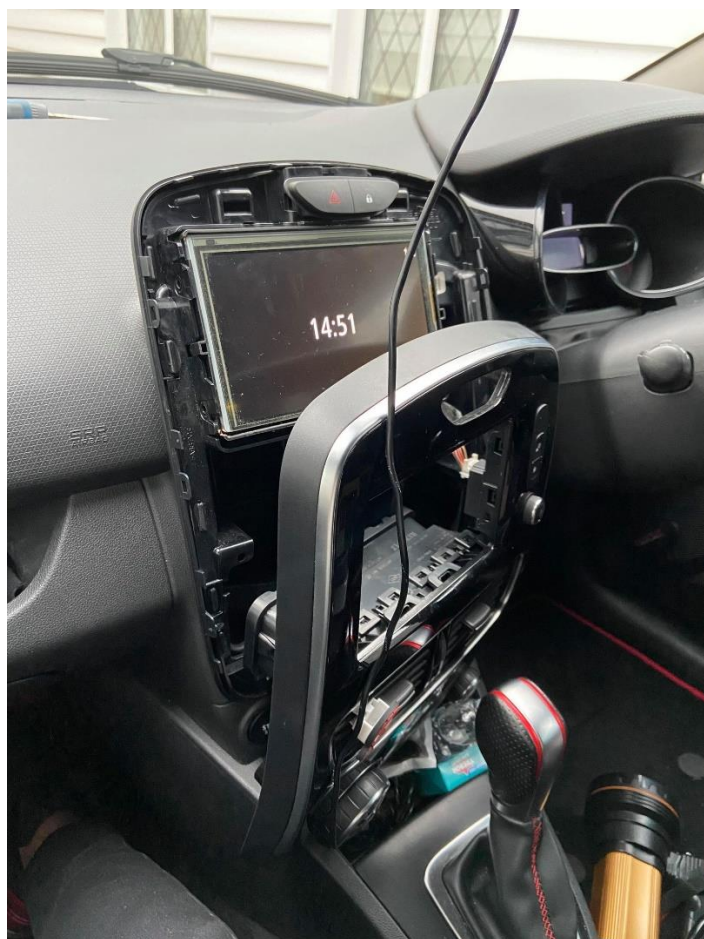
https://www.amazon.co.uk/gp/product/B012VSGQ0Q/ref=ppx_yo_dt_b_asin_title_o00_s00?ie=UTF8&psc=1

AND

WINGONEER® EEPROM Routing USB Programmer CH341A Writer LCD Flash for 25 SPI Series 24 ↓

https://www.amazon.co.uk/gp/product/B01H938PRK/ref=ppx_yo_dt_b_asin_title_o00_s00?ie=UTF8&psc=1

Using your hands, literally just yank the centre console out. It should look like this:

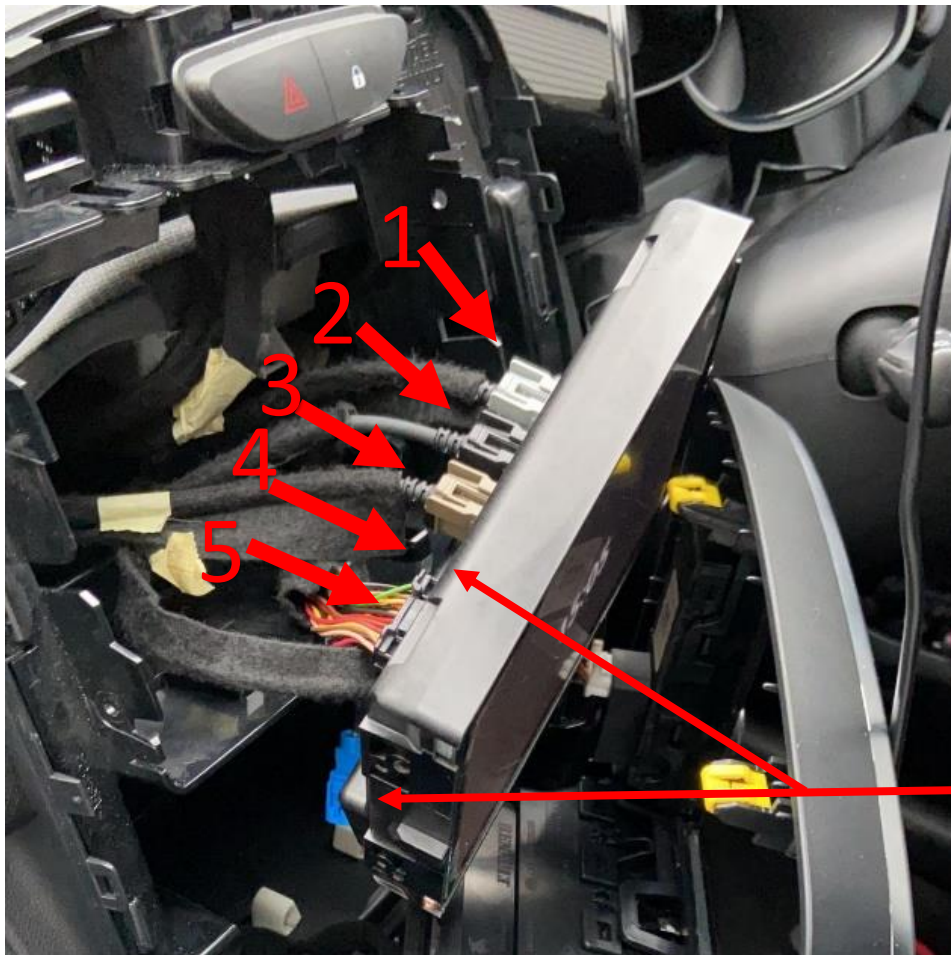


Once the centre console is popped out, you will see 4 screws. 2 on each side of the tablet:



using a **T20** screwdriver unscrew them and keep them in a safe place.

After you have done that, go ahead and pull the tablet out, pulling from the black casing around the border. There should be 5 connections on the back:



(When you pull the tablet out, connection number 4 will be connected in between number 3 and the number 5)

Unplug all 5 (not at the same time) by pressing on the middle plastic area of the cable connection and pull away from the tablet.

Once you have unplugged all cables get a **T10** screwdriver and unscrew the 4 screws on the back of the tablet (screws are black).

Put the screws somewhere **safe**.

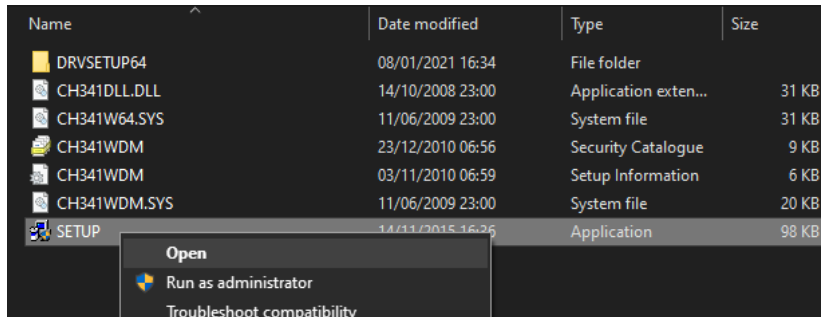
Now imagine you've just bought a new iPhone and you're trying to open the box..? Like how you just hold the lid of the box and let the actual box slowly slide out? Yeah, that's how you're going to get the tablet out of the black casing.

If that doesn't work, just flip the tablet so it's facing the ground, hold the casing and shake violently until the tablet slides out. (Soft pillow recommended for tablet to land on).

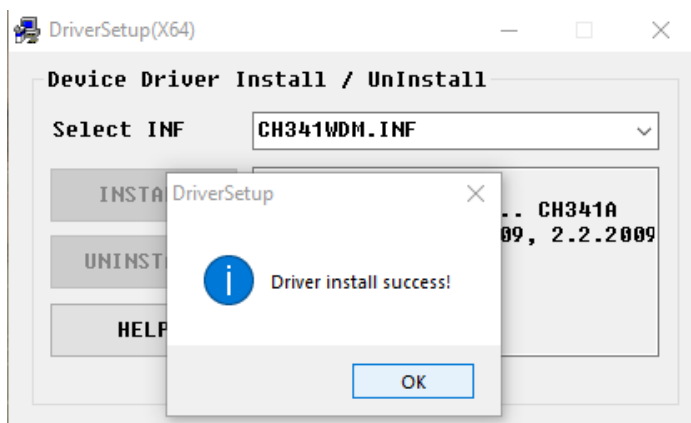
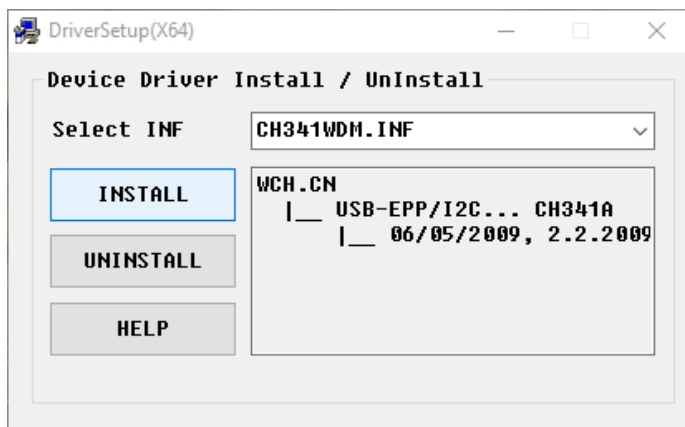
That's the mechanical part over, now we have to move on to the software part where you will become a programmer. (Yay binary!)

First insert the programmer into a USB port on your Laptop/PC

Then go to CH341PAR > open "SETUP" and click yes at the administration prompt.

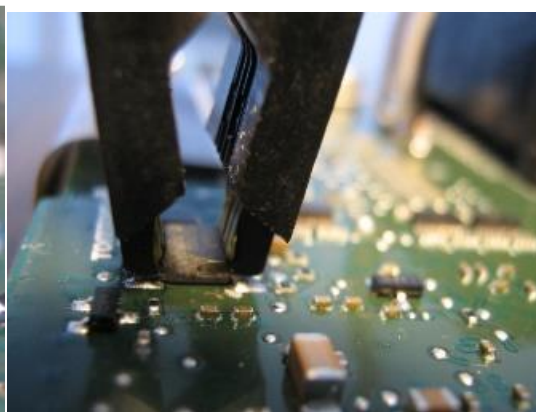
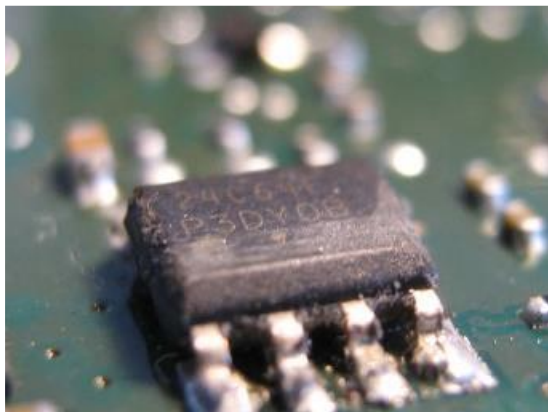
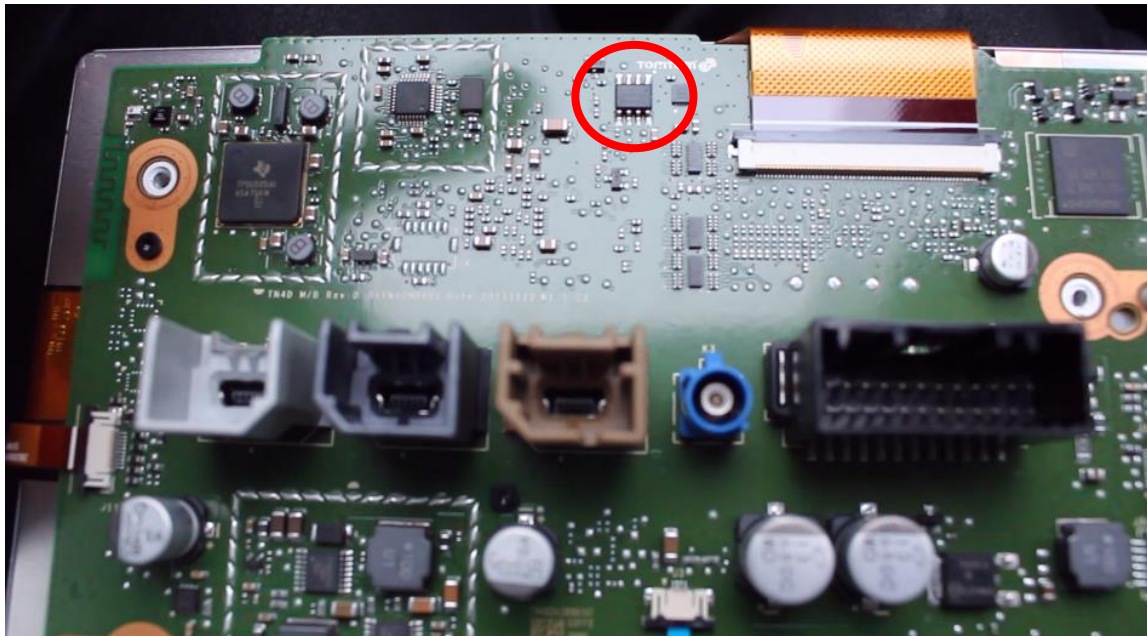


Click INSTALL. You should see "Driver install success!" click OK and close the setup.



At this point the tablet (R-Link) needs a power supply, so get the black rectangle looking cable and plug it back into the R-Link.

Attach the clamp on the programmer to the tiny black socket of the R-Link. (Circled in red)



Open the "CH341A-programmer-software-1.29" folder and launch "CH341A_C" as an administrator. (Right click > Run as administrator)

Once CH341A_C is open and the clamp is attached to the R-Link, click on "Read".

If you attached the clamp to the tablet correctly, you should see random data/numbers/letters in the software.

IF YOU GET AN ERROR: If you don't see any random numbers/letters or you get an error message, then you have not attached the clamp correctly, unclip the programmer and attach it the other way, (Twist 180 degrees) and click "Read".

IF YOU DO NOT GET AN ERROR: Once you see random numbers/letters click "Verify" and then click Save, name it something like "R-Link original".

Once you have written all the codes, click "Save" and name it something like "RS Monitor Complete".

Now we have to inject all of this into the R-Link.

1. First close the CH341A_C software
2. Attach the clamp onto the tiny black socket on the R-Link Tablet (make sure it's attached correctly)
3. Open CH341A_C as administrator and click "Read".
4. Click "Open" and double click on the file you modified earlier "RS Monitor Complete.Bin" or whatever you named it!
5. Click "Write"
6. And finally click "Verify"

Close the software and remove the clamp, you won't need it anymore.

The RS Monitor may not appear right away, so you have to turn the R-Link off and on several times or try doing a soft reset by pressing the home button 5 times.

Well done you did it, enjoy the RS Monitor!